

I Installation Notice

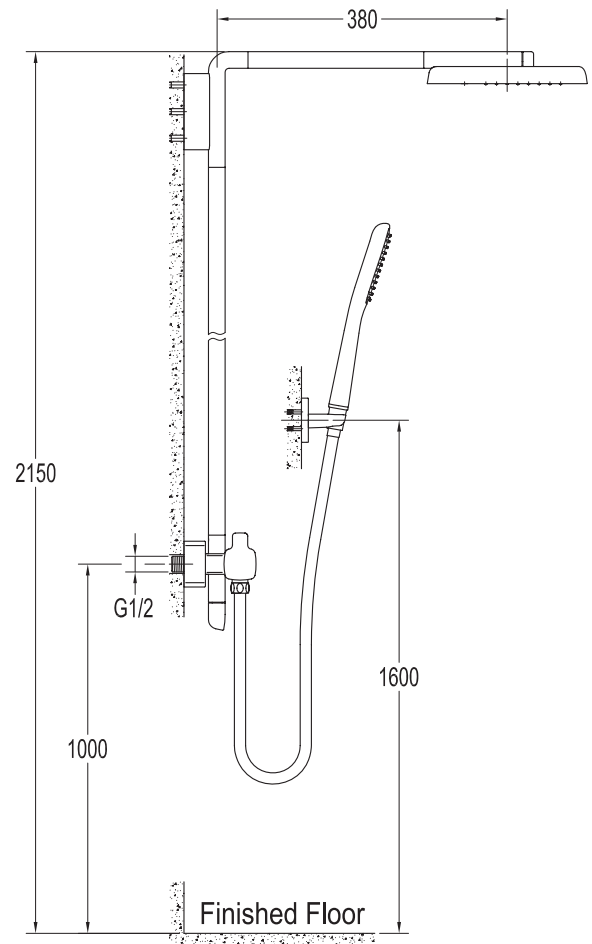
1. Install water supply lines in accordance with this manual.
2. Floor drain should be installed in the location of the faucet.
3. Install the faucet only after the completion of house interior decoration in case paint or other chemicals erode the faucet surface.
4. Clean pipes to get rid of mud, sand or other debris blocked in pipes.
5. Check whether the threads can be matched. Otherwise, too strong force applied to the wrench will damage the faucet.
6. After installation, check all the joints to make sure they are firmly connected. Then keep water flow. Turn on and off repeatedly to ensure there is no leakage around the joints. At this stage, the product is ready for normal use.
7. Keep the manual to the user.

II Operation Notice

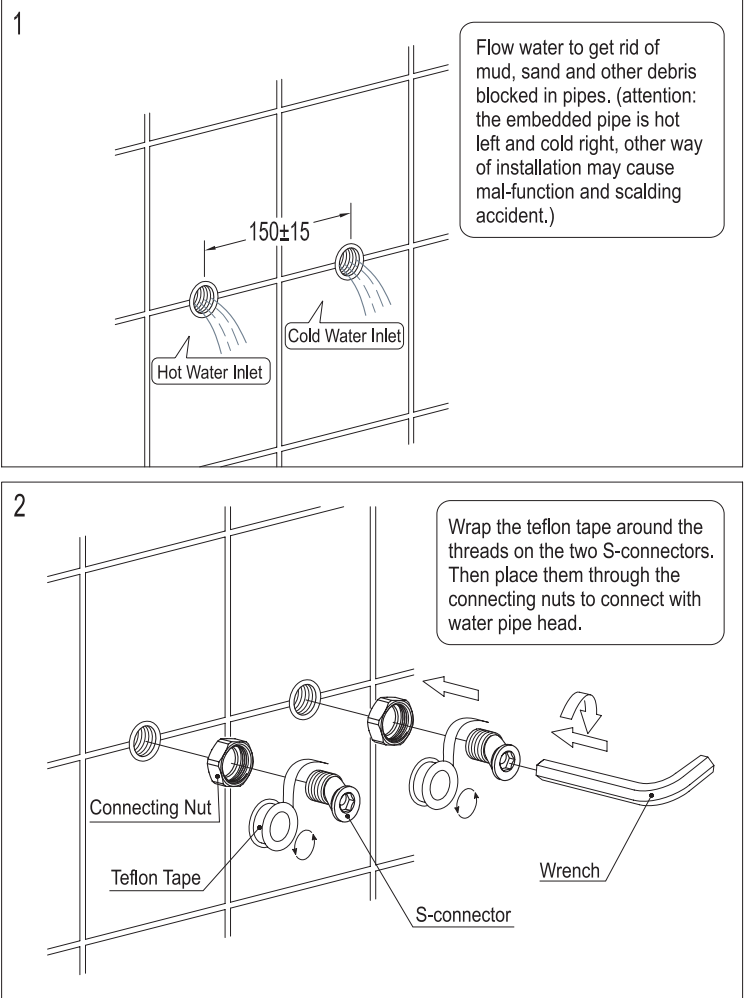
1. The product is used between water pressure 0.1~1.0MPa, hot water temperature 55~85°C, cold water temperature 4~29°C. Attention to the greater pressure difference. The product works best under the condition of hot water temperature 15°C, cold water 65°C and water pressure 0.3MPa.
2. Do not hang heavy things on the faucet.
3. Make sure the faucet is off when no water comes out of it (especially when nobody resides in the house or during the period of decoration or the absence of water).
4. Always clean the surface of faucet to keep it bright.
Attention: Please do not use inappropriate tools such as sharp brushes, rough sponges, scouring pads or corrosive detergent to clean the faucet, and we do not recommend that you use the detergent sold in the market, because its formula is changing frequently. Please clean the faucet by wet cloth and soapy water after each time of usage. Then rinse the soap out with clean water and dry with a soft cotton cloth.
5. When the room temperature drops to below 0°C, take necessary measures (such measures as keeping faucet warm and closing windows) to prevent the faucet from being frozen or even broken (especially when windows kept open for air ventilation while nobody resides in).
6. Use the product only after the water temperature had been adjusted. Do not touch the hot part of faucet to avoid scalding.
7. Do not disassemble the product unless for an expert.

BS01571125. ZX

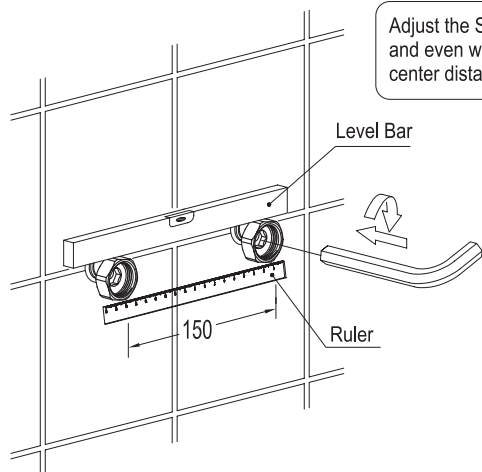
III Installation Diagram:



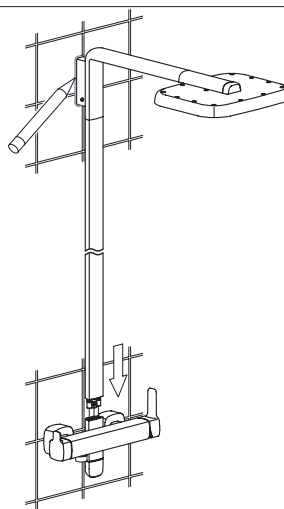
IV Installing Steps: (As shown in figure 1~22)



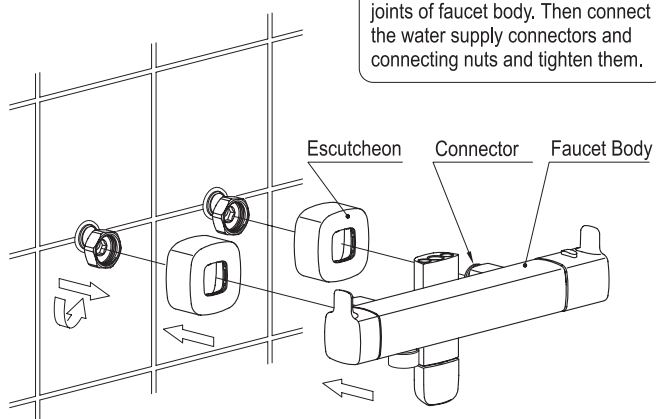
3



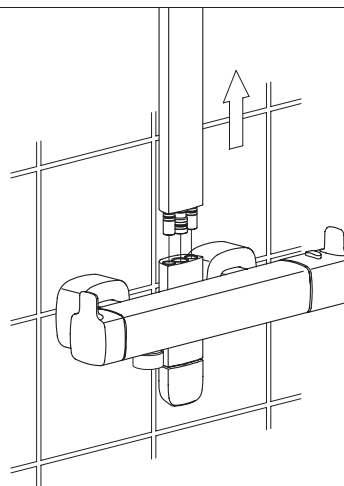
7



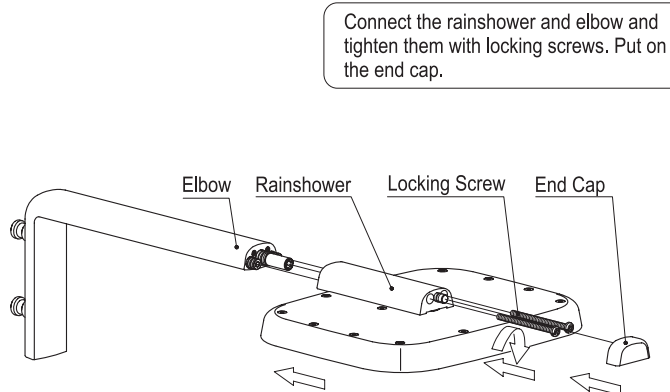
4



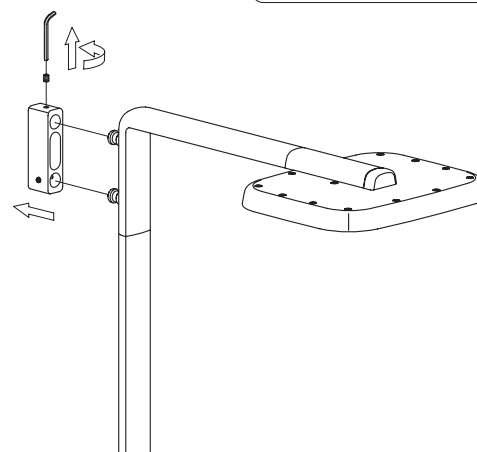
8



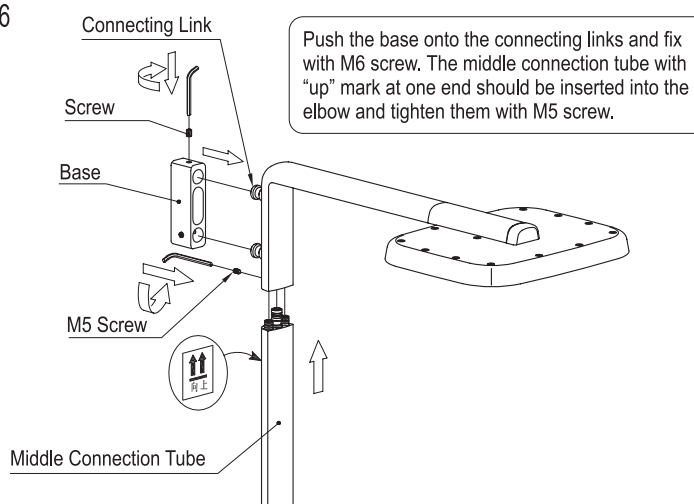
5



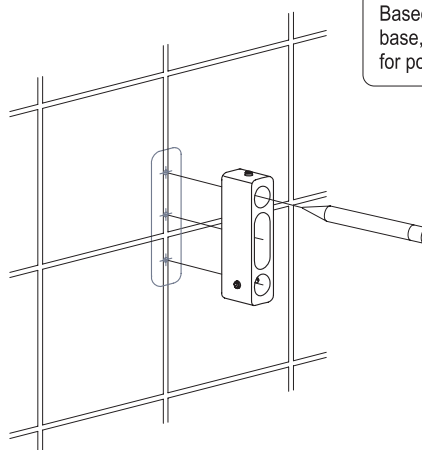
9



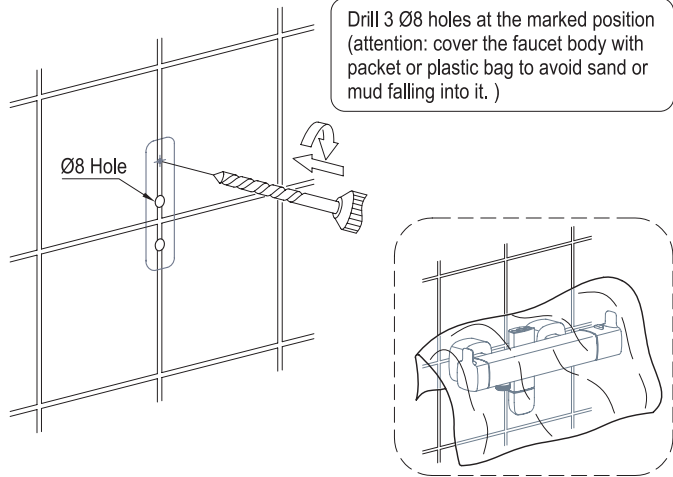
6



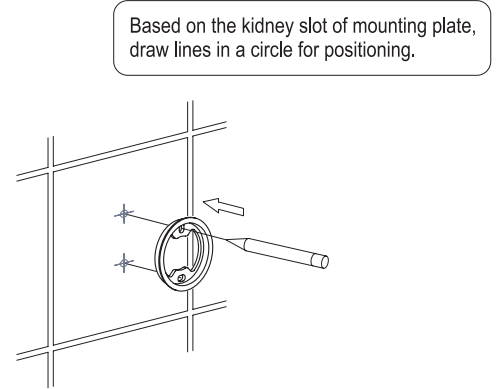
10



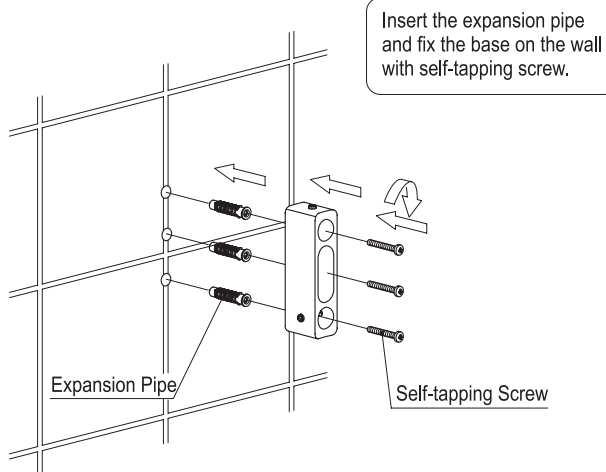
11



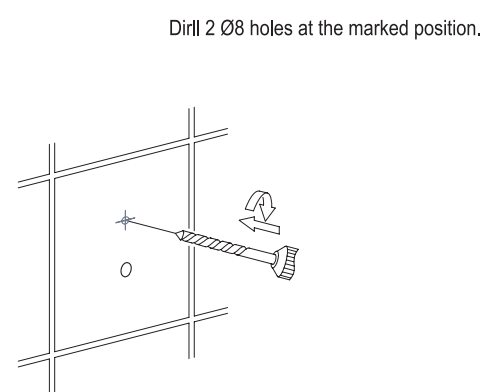
15



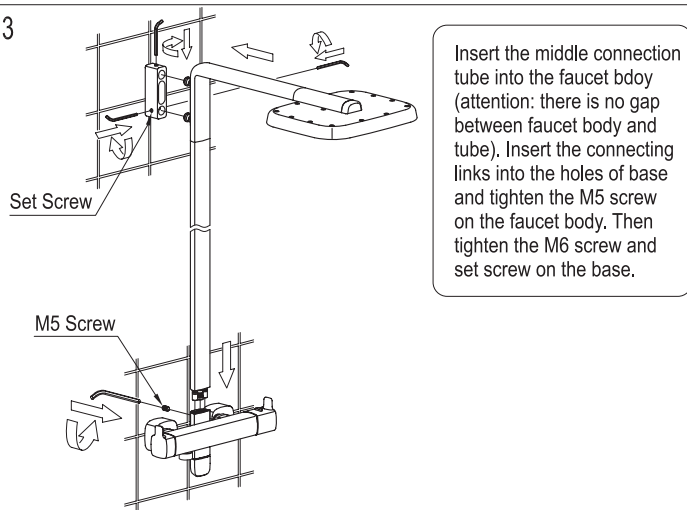
12



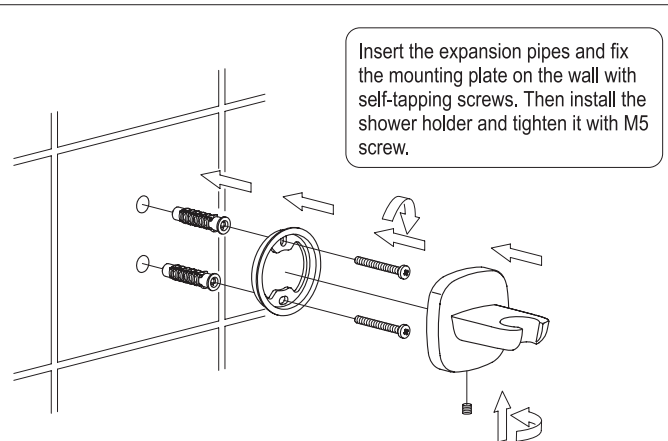
16



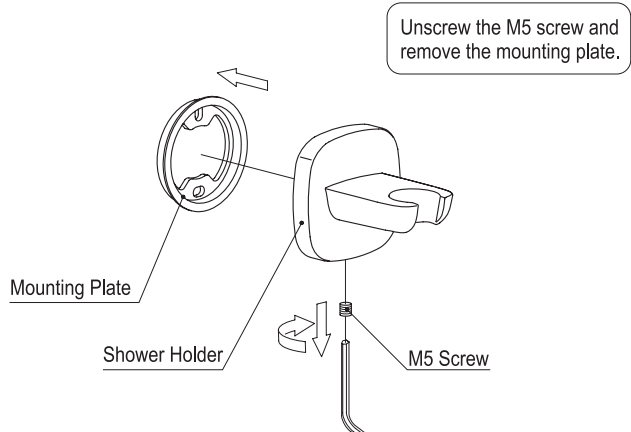
13



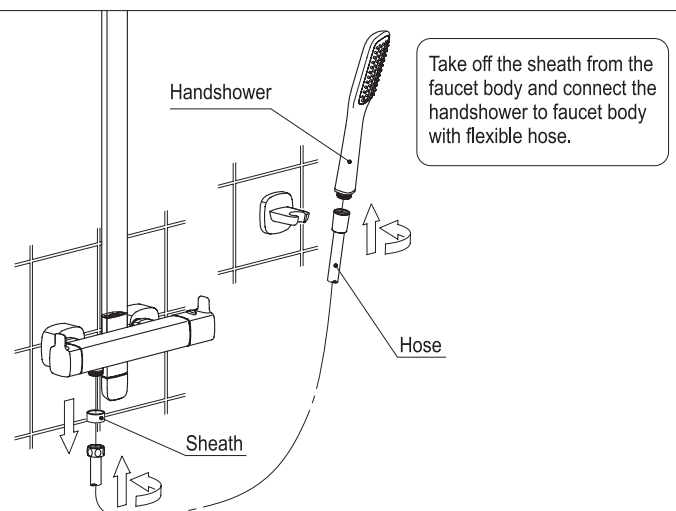
17



14



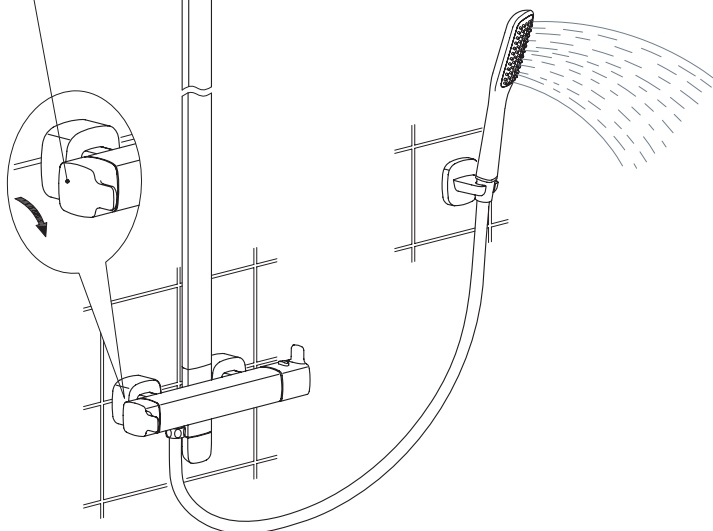
18



19

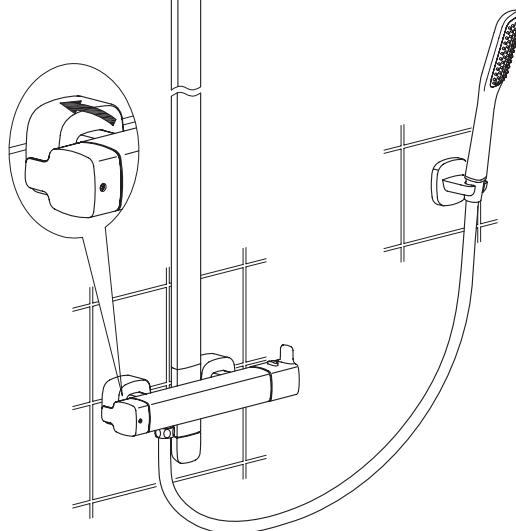
After installation, run water for inspection. The figure is for the case when handle is turned forward and water flows from the handshower.

Diverter Handle



21

Turn the diverter handle for rainshower water.



20

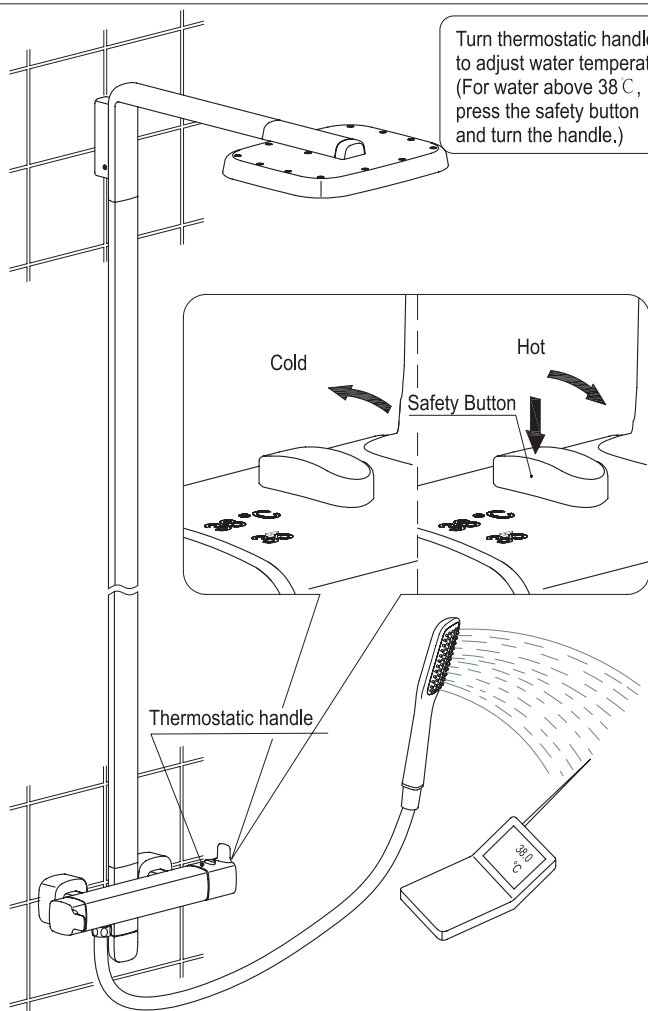
Turn thermostatic handle to adjust water temperature. (For water above 38 °C, press the safety button and turn the handle.)

Cold

Hot

Safety Button

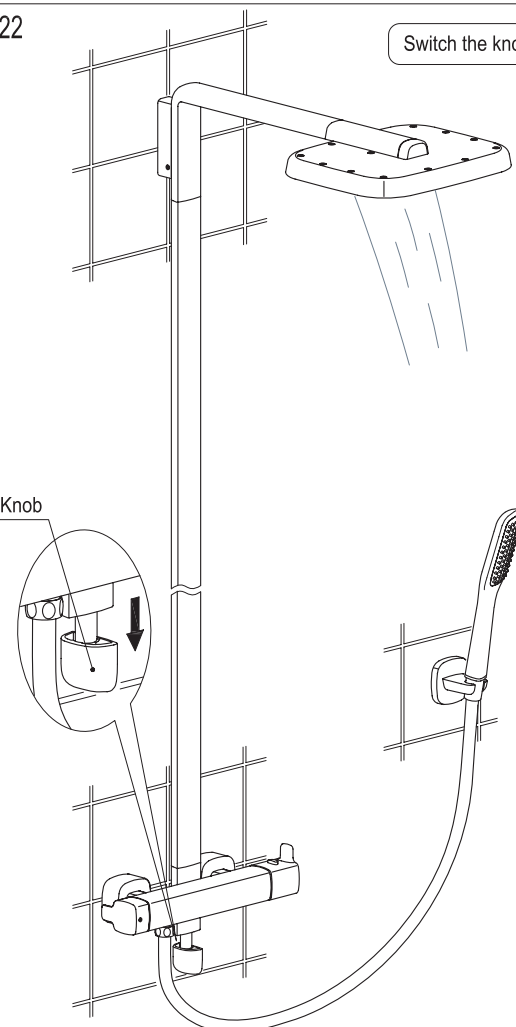
Thermostatic handle



22

Switch the knob for water-fall water.

Knob



V. Cleaning (As shown in figure 1~5)

If water flow is less than normal or the failure of temperature control after a period of usage (possibly because the filtering net is blocked by unclean water), do cleaning as the steps followed.

