

INSTRUCTION MANUAL

BS81021943

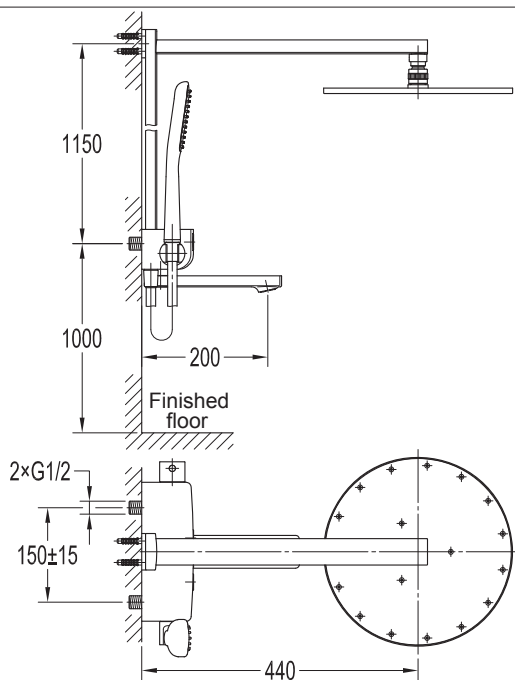
III. Operation Notice

1. The product is used under cold water temperature 4~29°C, hot water temperature 55~85°C and water pressure 0.1~1.0 MPa. To avoid large pressure difference between hot and cold water, the thermostatic cartridge is preferably in use under the condition of water pressure 0.3 MPa, cold water 15°C, hot water 65°C. Main valve should be equipped with a filter.
2. To avoid using the faucet as hand rail, a separate hand rail must be installed if needed. Also, do not hang heavy things on the mixer.
3. Make sure the faucet is off when no water comes out of it, especially when nobody resides in or during the period of decoration or suspension of water.
4. Regularly clean the surface of faucet to keep it bright. Attention: Do not use inappropriate tools such as sharp brushes, rough sponges, scouring pads or corrosive detergent to clean the faucet. It is not recommended to use the detergent sold in the market, because its formula changes frequently. Please clean the faucet with wet cloth and soapy water after usage. Then rinse the soap off with clean water and dry with a soft cotton cloth.
5. Residues of shampoo, shower gel, hair dye, perfume, shaving water, nail polish, toothpaste and other substances may cause damage to the product. Please carefully rinse residues with clean water after use. Also, do not store detergents and chemicals under the product, such place as vanity cabinet of washbasin; otherwise volatile gases will damage the product.
6. When indoor temperature drops below 0°C, take necessary measures (keep the product warm, close windows) to prevent the product from frost cracking (especially when windows open for air ventilation while nobody in the house).
7. Adjust the temperature before use to avoid scald.
8. Sensitive parts of the body, such as eyes, must be kept out of water flows from shower head and sufficient distance between shower head and human head is needed.
9. Children, adults with mental disorders should not be allowed to use the shower system without supervision, nor should people affected by alcohol or drugs.
10. Do not disassemble the product without help from the professionals.

I. Installation Notice

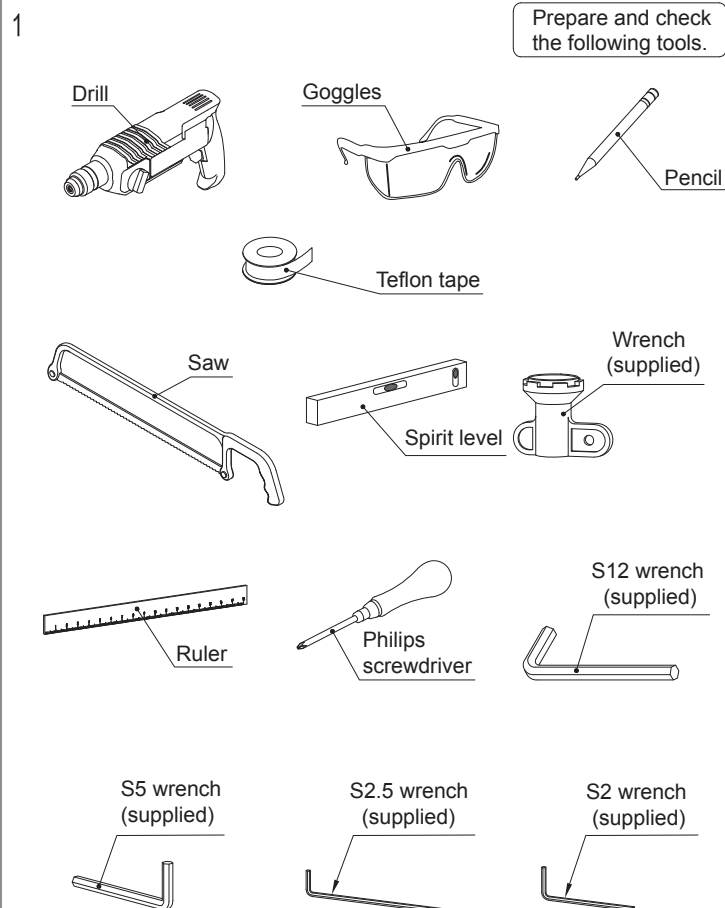
1. Install water pipes in accordance with this manual. Floor drain should be installed on the site.
2. All the components except mixer body should be installed only after the completion of house interior decoration in case paint or other chemicals erode the mixer surface.
3. Clean pipes to get rid of mud, sand or other debris blocked in pipes before installation.
4. If the thread do not match well with the water pipe, please find out the reason first; otherwise a forced connection will damage the faucet.
5. After installation, check all the joints to ensure they are firmly connected. Turn on and off the water repeatedly to ensure there is no leakage around the joints. After that, the product is ready for normal use.
6. Hand the manual to users.

II. Installation Diagram



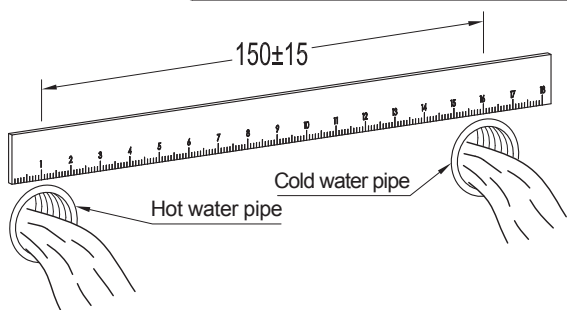
IV. Installation Steps(Fig.1-23) :*

The installation diagram is only for reference.
The product is subject to the real object.



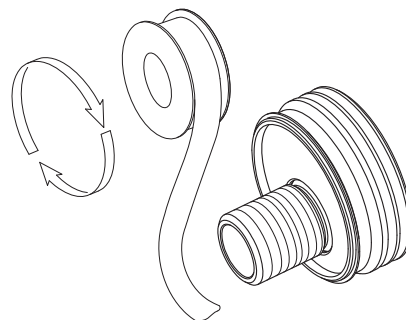
2

In the wall about 1000mm off the ground, install hot and cold pipes with the distance 150mm in between. Please note that inlets must be connected for hot left and cold right. Otherwise thermostatic cartridge will malfunction, or even cause scalding. Run water to get rid of the debris in pipes.



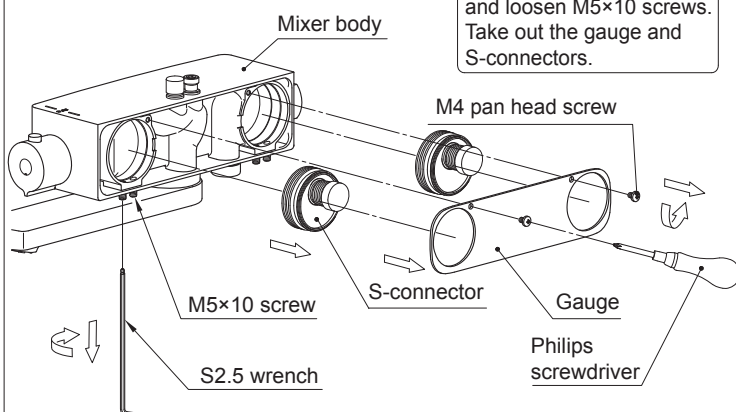
6

Wrap the two S-connectors with teflon tape.



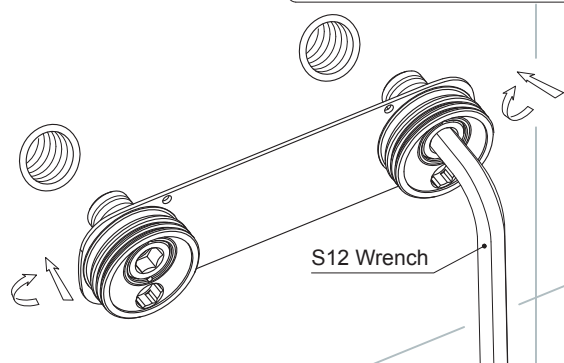
3

Take two M4 pan head screws off the mixer body and loosen M5×10 screws. Take out the gauge and S-connectors.



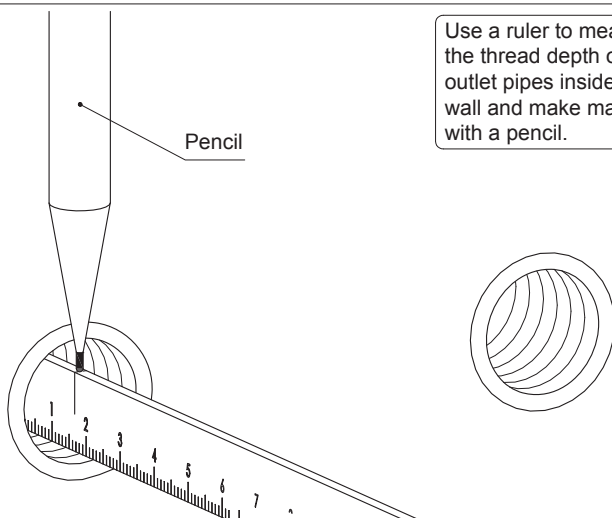
7

Put two S-connectors through the gauge to connect with the outlet pipes. Use S12 wrench to slightly tighten the inlet threaded pipes.



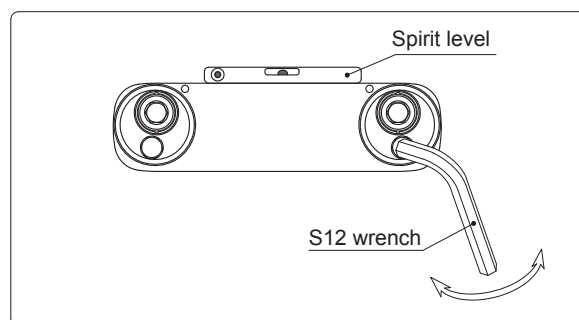
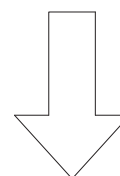
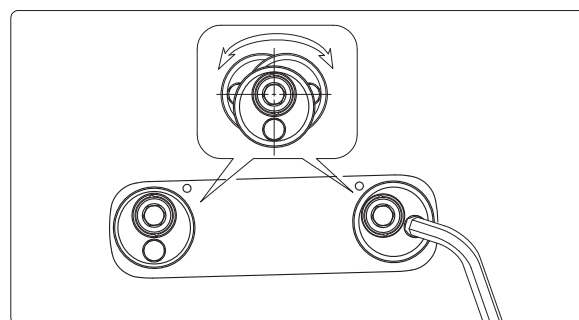
4

Use a ruler to measure the thread depth of outlet pipes inside the wall and make marks with a pencil.



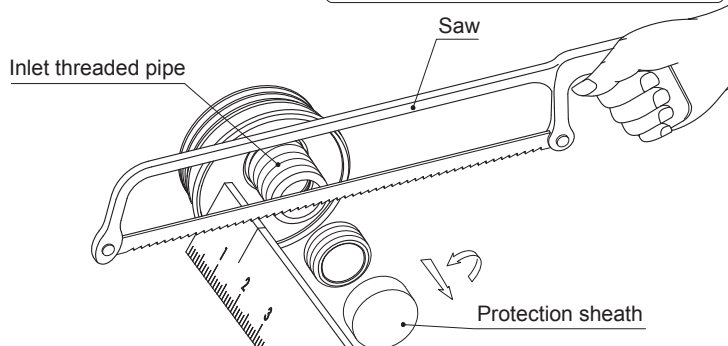
8

Use S12 wrench to adjust the S-connectors to the horizontal state of the gauge and then check with a spirit level.



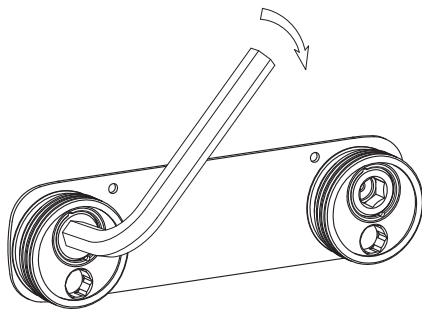
5

Take the protection sheath off the inlet threaded pipes. Use a ruler to measure the thread length of inlet threaded pipes, which must be less than the thread depth of water pipes, otherwise excessive parts must be cut off with a saw.



9

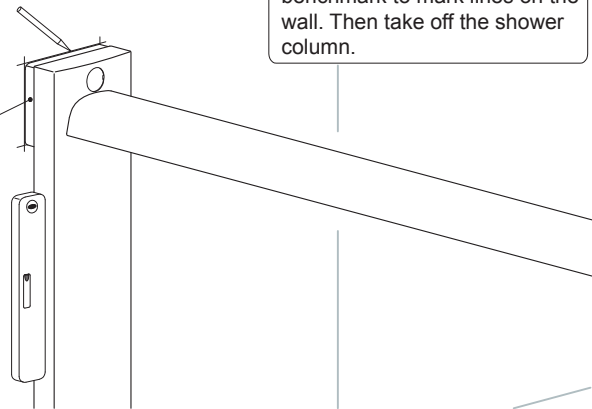
Tighten the inlet threaded pipes with S12 wrench.



12

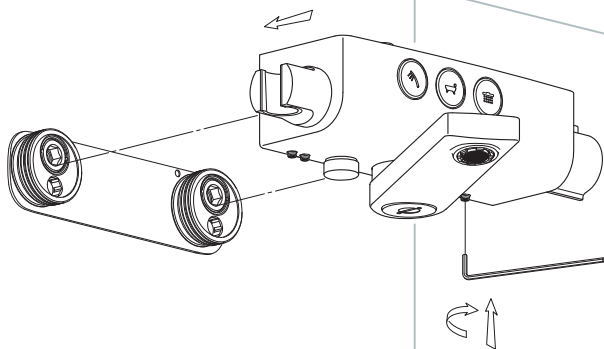
Adjust the shower column to vertical state with a spirit level. Take the installation base as benchmark to mark lines on the wall. Then take off the shower column.

Base



10

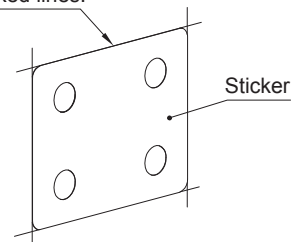
Install mixer body onto the S-connectors and tighten the M5×10 screws.



13

Tear the sticker off the gauge and stick it on the marked lines.

The sticker edge should be aligned with the marked lines.



11

Shower column

S2.5 wrench

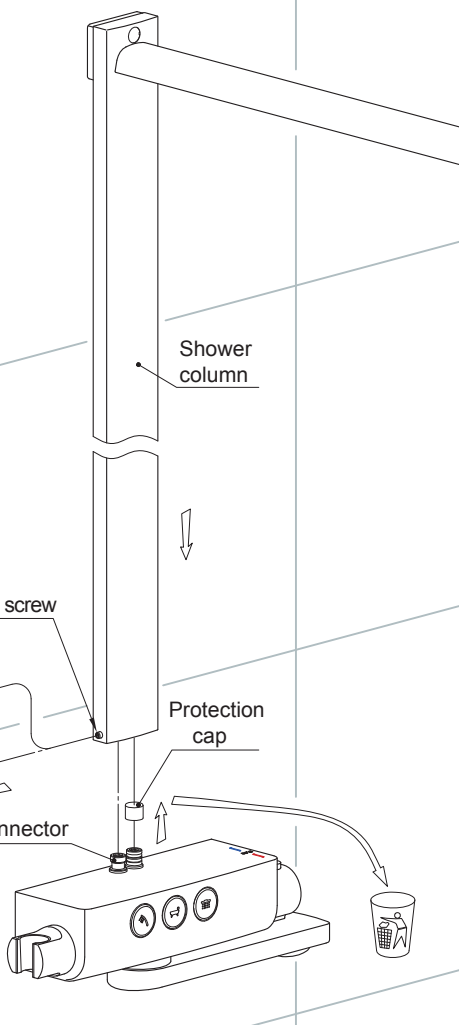
M5×12 screw

Protection cap

Cap

Connector

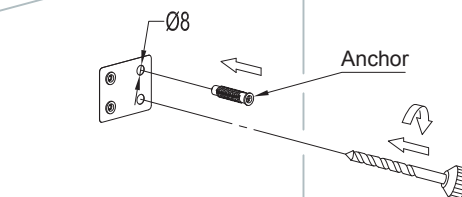
Remove the protection cap and cap. Loosen M5×12 screw and put the shower column onto the connector.



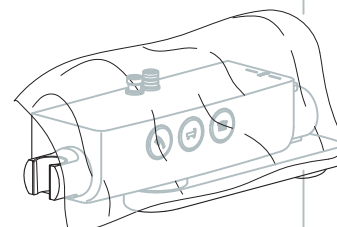
14

Ø8

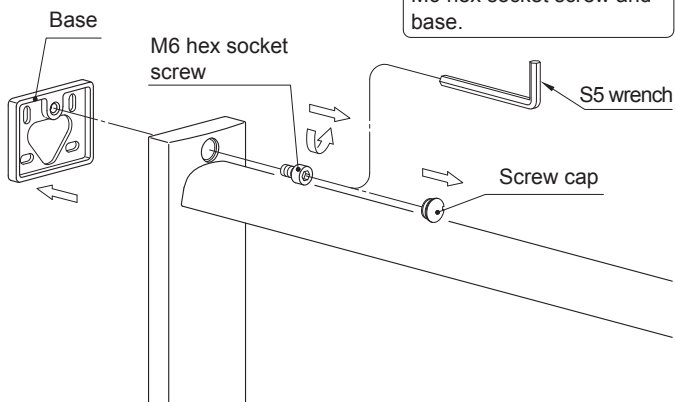
Anchor



To prevent sand or other debris from falling onto the product during drilling, please cover the mixer body with a cloth bag. Drill four Ø8 holes based on the holes of the sticker. Then insert the anchors and take off the sticker.

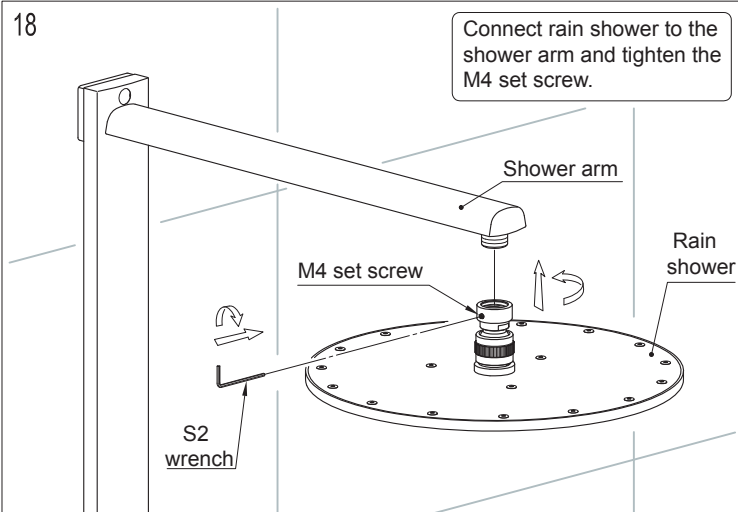


15



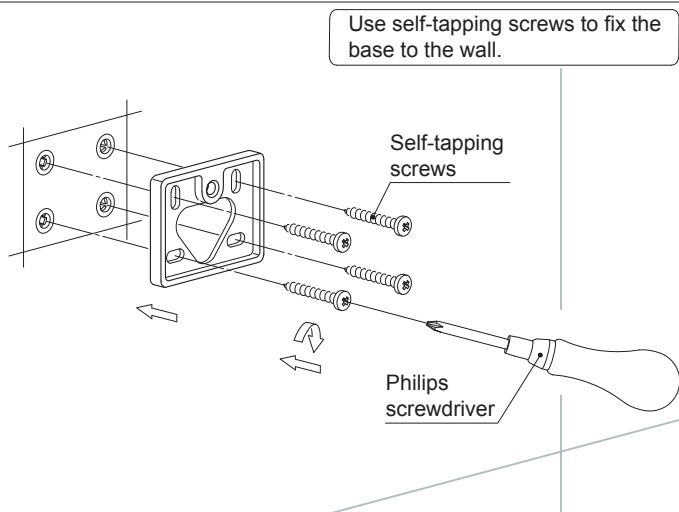
Pick out the screw cap by a sharp pointed tool and use S5 wrench to remove the M6 hex socket screw and base.

18



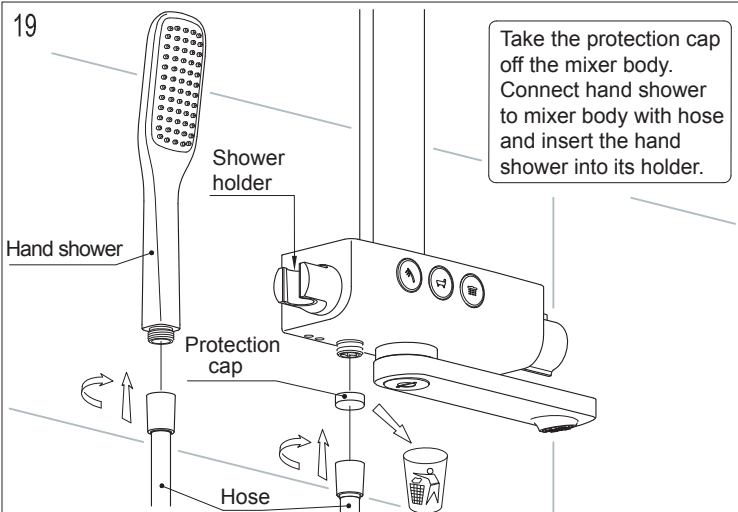
Connect rain shower to the shower arm and tighten the M4 set screw.

16



Use self-tapping screws to fix the base to the wall.

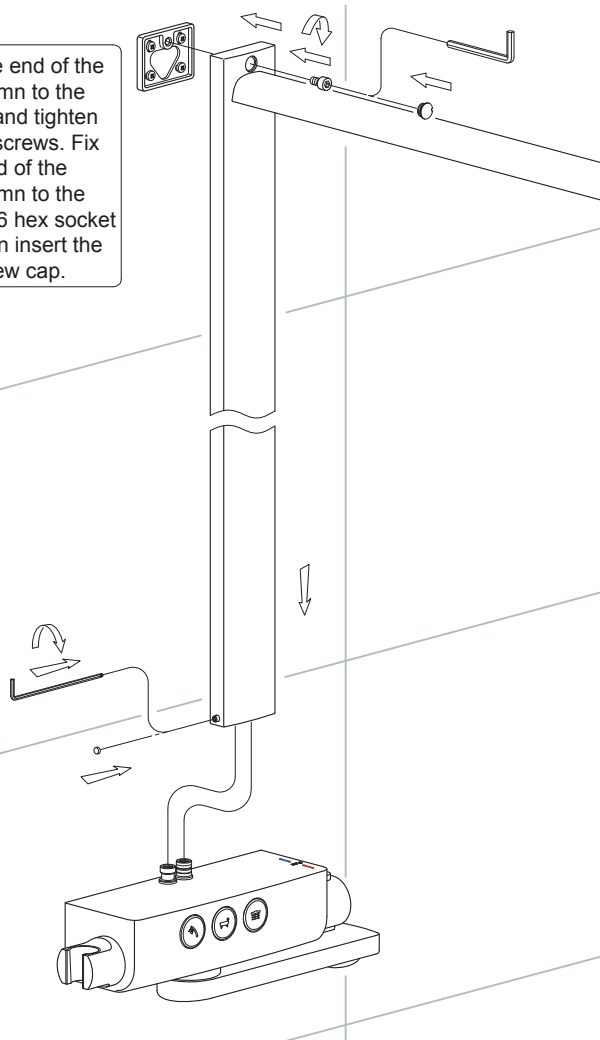
19



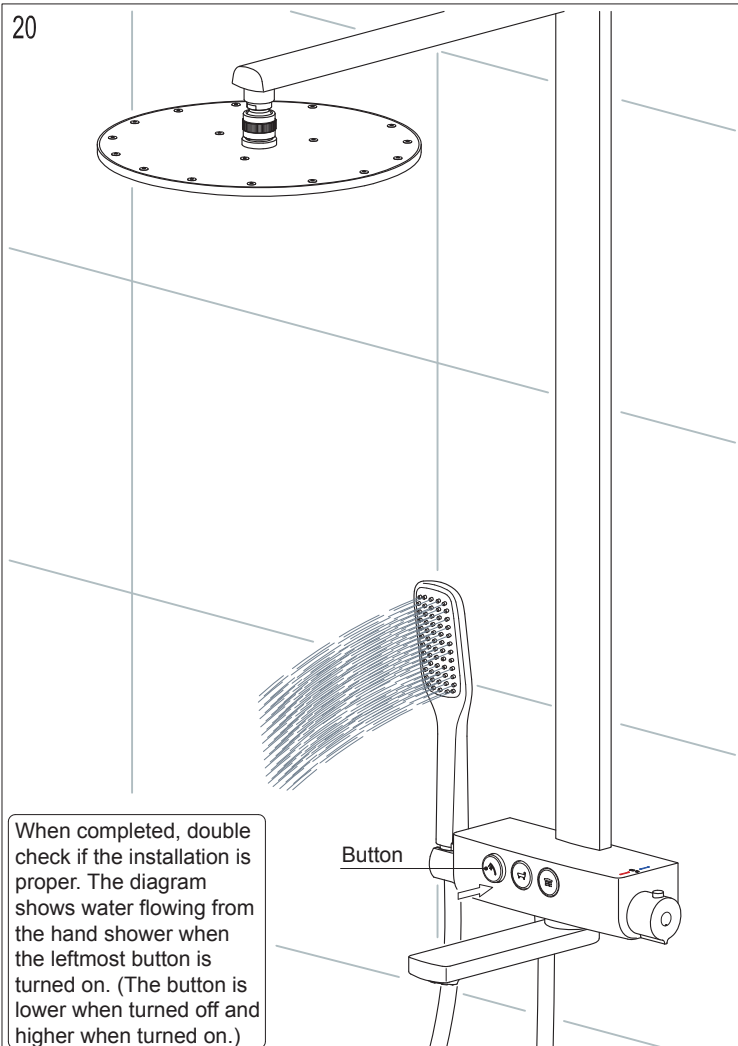
Take the protection cap off the mixer body. Connect hand shower to mixer body with hose and insert the hand shower into its holder.

17

Connect one end of the shower column to the connectors and tighten with M5×12 screws. Fix the other end of the shower column to the base with M6 hex socket screws. Then insert the cap and screw cap.

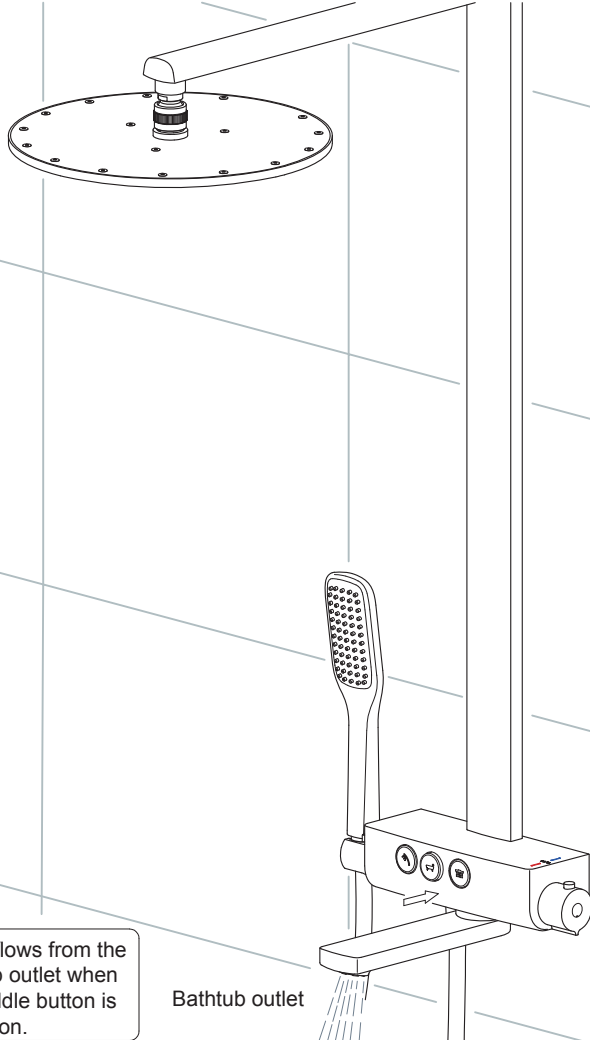


20



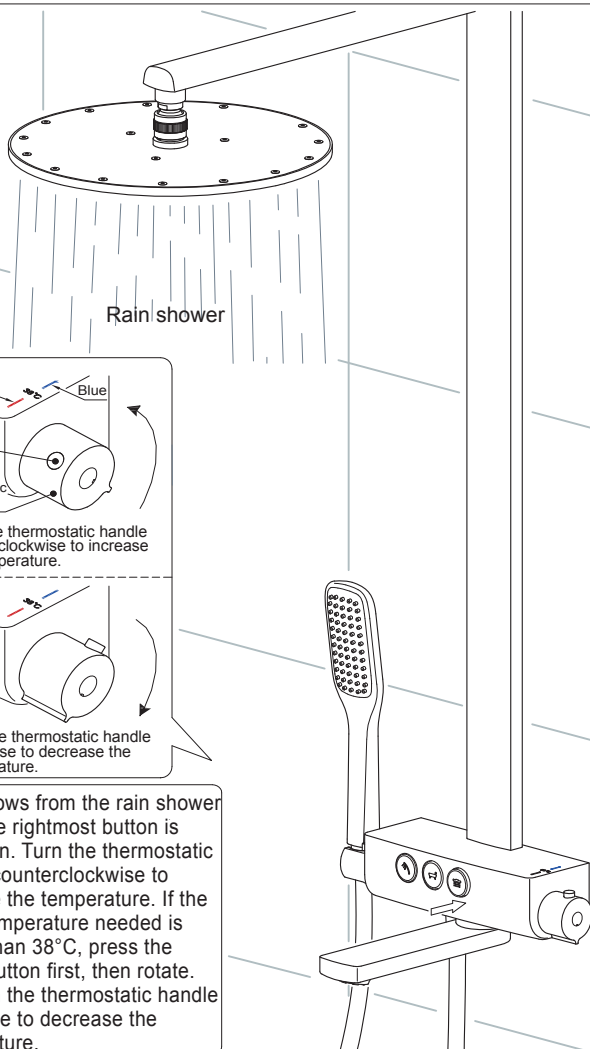
When completed, double check if the installation is proper. The diagram shows water flowing from the hand shower when the leftmost button is turned on. (The button is lower when turned off and higher when turned on.)

21



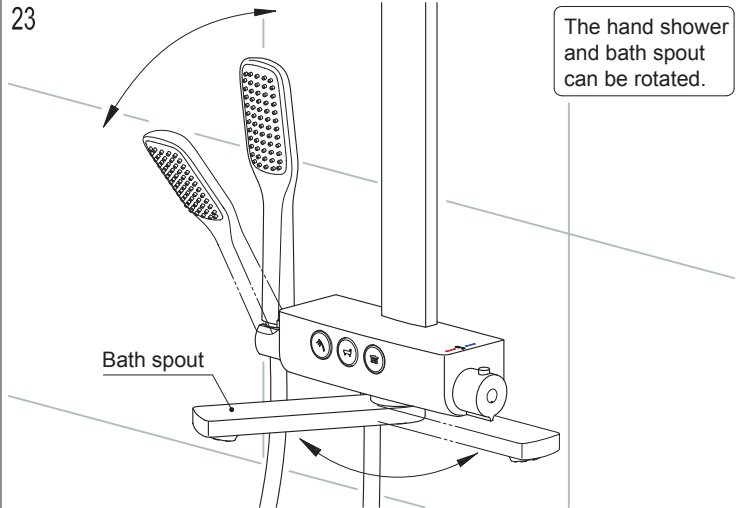
Bathtub outlet

22



Rain shower

23



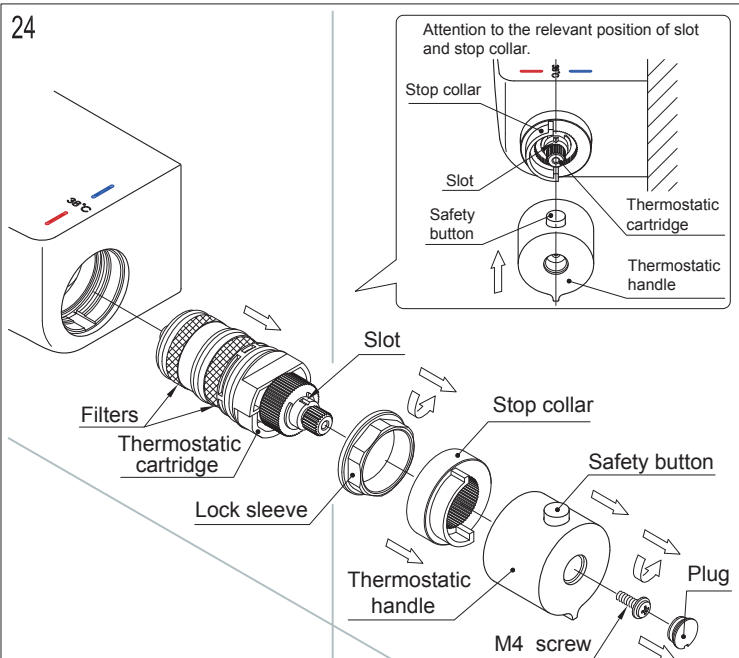
Bath spout

V. Maintenance (Diagram 24-26):

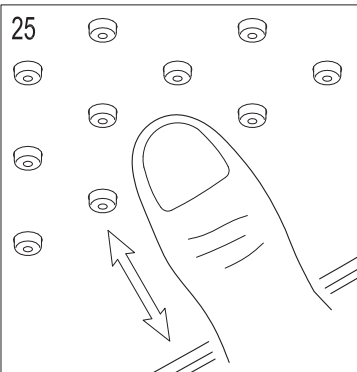
If the flow rate becomes lessened or temperature control is imprecise after a period of usage, it is possibly because water of poor quality blocks the filter of the thermostatic cartridge. Cleaning method should be taken as followed: First, turn off the main inlet valve. Then pick out the cap by a sharp pointed tool as shown in Diagram 24. Remove the followings one by one : M4 check screw, thermostatic handle, stop collar and locking nut. Take out the thermostatic cartridge and clean its filter part with a brush and vinegar. Then assemble them back accordingly. Pay attention to keeping the four parts on one line: the slot on the thermostatic cartridge, stop collar, the safety button on the thermostatic handle and the 38°C mark on the mixer body.

If water flow from the rain shower does not spray evenly, or no water comes out of some outlets, it is possibly because dirt or debris blocks the nozzles. Please gently squeeze those rubber nozzles with fingers as shown in Diagram 25 and clean up the debris. If water flow from the showers is normal, but lessened when it comes out of the bath spout, it might be dirt or debris blocks the aerator. Please take the aerator off as shown in Diagram 26 and assemble it back after cleaning.

24



25



26

