

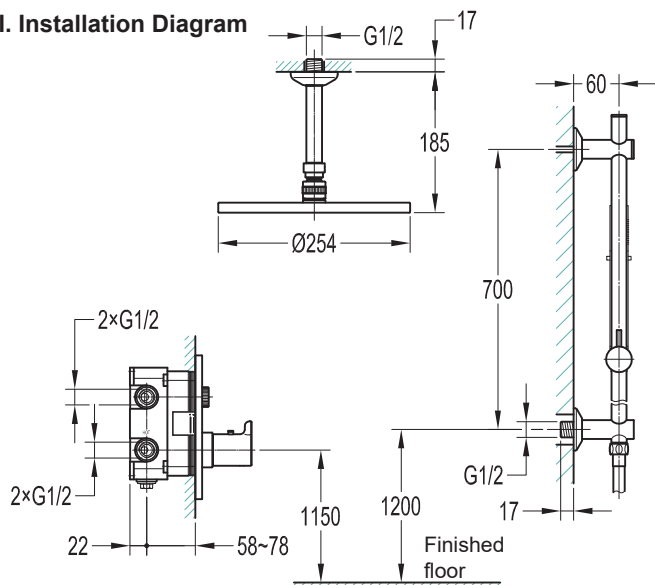
INSTRUCTION MANUAL

BS83712115

I. Installation Notice

1. Install water pipes in accordance with this manual.
2. Floor drain should be installed on the site.
3. All the components except mixer body should be installed only after the completion of house interior decoration in case paint or other chemicals erode the mixer surface.
4. Run water to clean pipes so as to get rid of mud, sand or other debris blocked in pipes before installation.
5. If the thread does not match well with the water pipe, please identify the cause first; otherwise a forced connection will damage the product.
6. After installation, check all the joints to ensure they are firmly connected. Turn on and off the water repeatedly to ensure there is no leakage around the joints. After that, the product is ready for normal use.
7. Keep the manual to users.

II. Installation Diagram

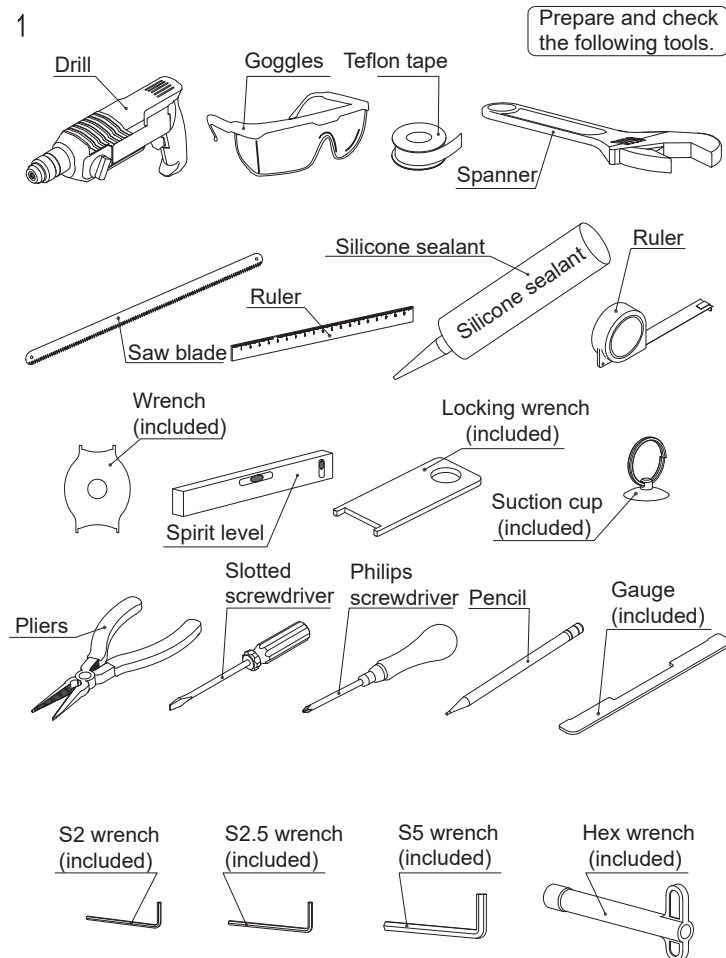


III. Operation Notice

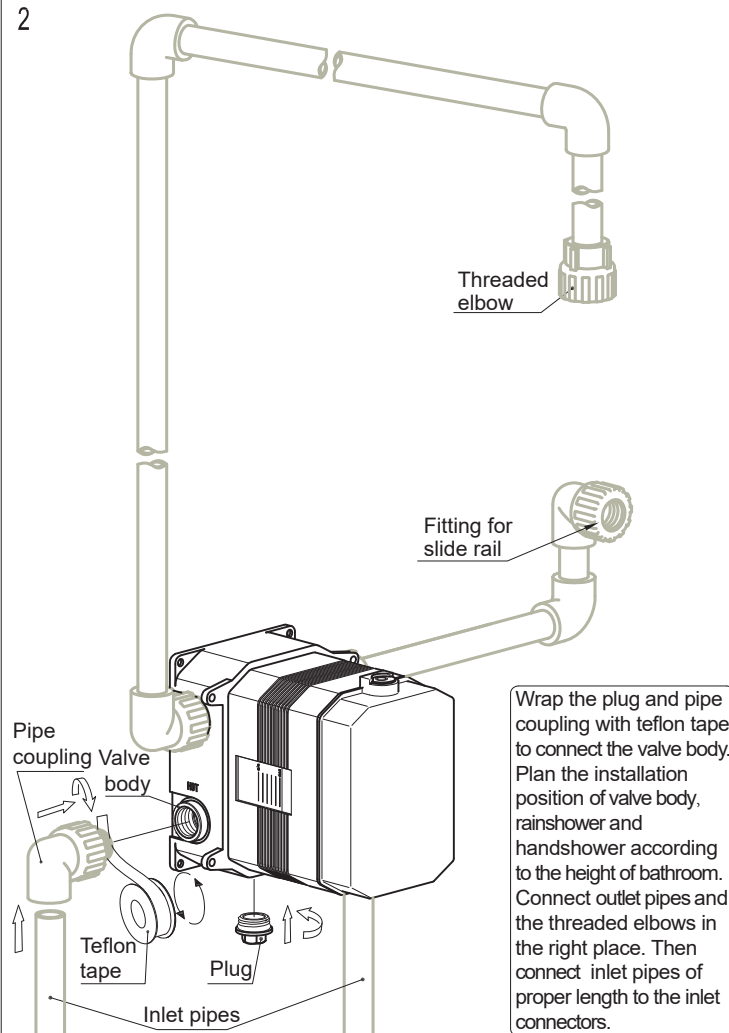
1. The product is used at cold water temperature 4~29°C, hot water temperature 45~85°C and water pressure 0.05~1.0 MPa. Please avoid large pressure difference between hot and cold water. The thermostatic cartridge is preferably in use under the condition of water pressure 0.3 MPa, cold water 15°C, hot water 65°C. Main valve should be equipped with a filter.
2. To avoid using the faucet as hand rail, a separate hand rail must be installed if needed. Do not hang heavy objects on the mixer.
3. Make sure the faucet is off when no water comes out of it, especially when nobody resides in or during the period of decoration or suspension of water.
4. Regularly clean the surface of faucet to keep it bright. Attention: Do not use inappropriate tools such as sharp brushes, rough sponges, scouring pads or corrosive detergent to clean the faucet. It is not recommended to use the detergent sold in the market, because its formula changes frequently. Please clean the faucet with wet cloth and soapy water after usage. Then rinse the soap off with clean water and dry with a soft cotton cloth.
5. Residues of shampoo, shower gel, hair dye, perfume, shaving water, nail polish, toothpaste and other substances may cause damage to the product. Please carefully rinse residues with clean water after use. Also, do not store detergents and chemicals under the product, such place as vanity cabinet of washbasin; otherwise volatile gases will damage the product.
6. When room temperature falls below 0°C, take necessary measures (keep the product warm, close windows) to prevent the product from frost cracking, especially when windows open for air ventilation while nobody in the house.
7. Turn on the cold water first, then hot water. Adjust the temperature before use to avoid scald.
8. Children, adults with mental disorders should not be allowed to use the shower system without supervision, nor should people affected by alcohol or drugs.
9. Sensitive parts of the body, such as eyes, must be kept out of water flows from shower head and sufficient distance between shower head and human head is needed.
10. Do not disassemble the product without help from the professionals.

IV. Installation Steps(Fig.1-42):

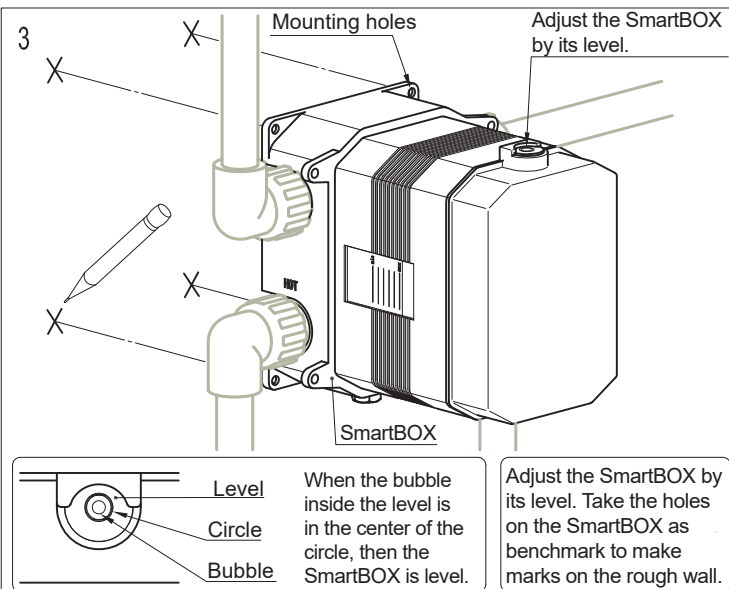
* The installation diagram is only for reference. The product is subject to the real object.



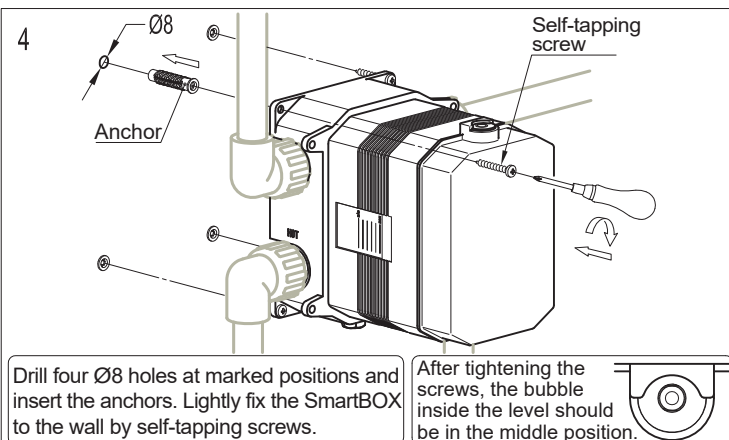
2



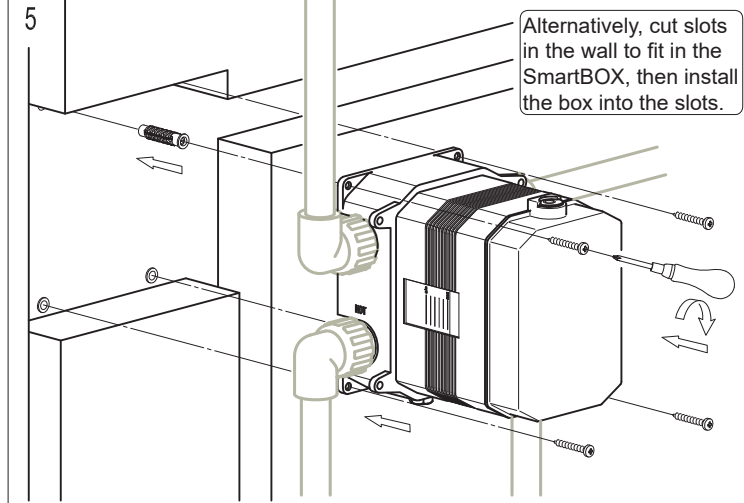
3



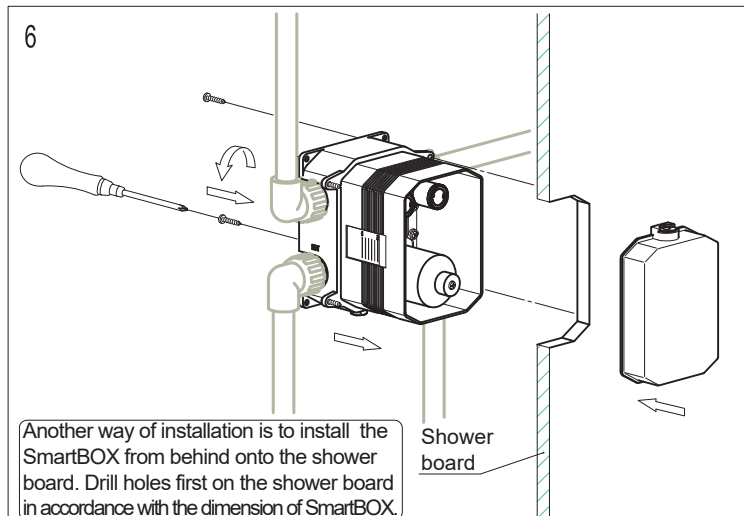
4



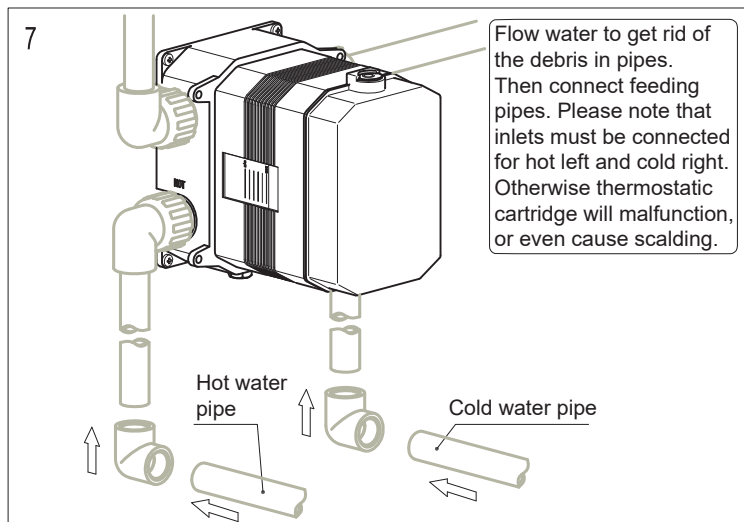
5



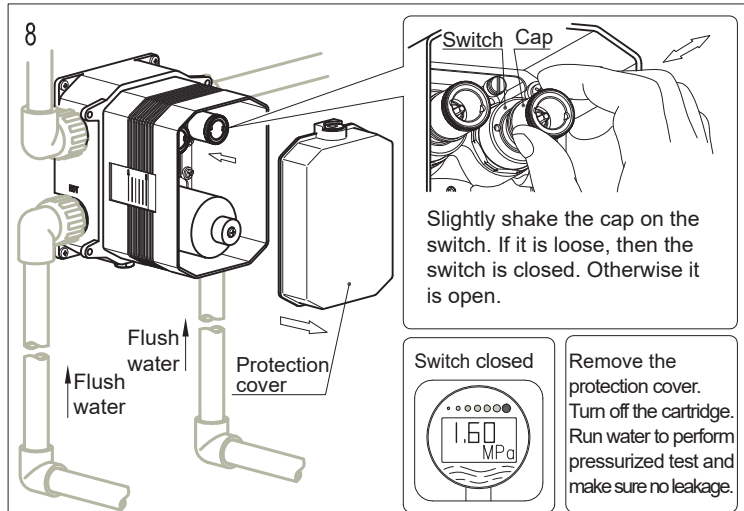
6



7



8



9

Flush water

Turn on the switch

0.40 MPa

Flush water

Flush water

Plug the outlet and turn on the switch. Run water to perform pressurized test and make sure no leakage. Then put back the protection cover.

10

Reference lines for the finished wall

min

max

Install ceramic tiles and ceiling. The distance from pipe center to the finished wall is 58-78mm.

11

Plug

Remove the plug. Flow water to get rid of the debris in pipes.

12

Fitting for rainshower

Escutcheon

Shower arm

Inlet thread

Slip escutcheon over the shower arm. Wrap the inlet thread with teflon tape, then screw the shower arm into the fitting for rainshower. Then place the escutcheon against the ceiling.

13

Ball joint

Protection sheath

O-ring

Shower head

Take the protection sheath off the shower head and tightly install the ball joint onto the shower head. Pay attention not to dropping the o-ring.

14

M4 screw

Wrench

Install the shower head onto the shower arm, then tighten with set screws.

15

Escutcheon

Holder

Wall fitting

Connector

Slip escutcheon over the holder. Wrap the connector with teflon tape, then screw them into the wall fitting. Place the escutcheon against the wall.

16

Insert the slide rail into the holder. Place the connecting rod against the wall. Adjust the slide rail to the vertical position. Take the contour of the connecting rod as benchmark to mark a circle on the wall. Then take off the slide rail.

Connecting rod

Slide rail

19

Slip escutcheon over the connecting rod. Then insert the slide rail into the holder. Slip the connecting rod over the mounting piece and place it against the wall. Tighten the M5×4 screw on the connecting rod and place the escutcheon against the wall.

Escutcheon

17

Loosen the M5×4 screw, remove the mounting piece off the connecting rod. Place the mounting piece against the circle on the wall. Take the kidney slots on the mounting pieces as benchmark to mark lines on the wall.

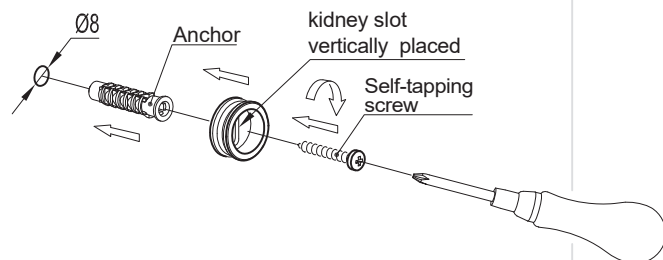
Place the mounting piece in the center of the circle

Place the kidney slot vertically

mounting piece

M5×4 screw

18



Ø8

Anchor

kidney slot vertically placed

Self-tapping screw

To prevent sand or other debris from falling onto the product during drilling, please cover the holder with a cloth bag.

Drill Ø8 holes on the marked lines and insert the anchors. Lightly fix the mounting piece to the wall by self-tapping screws. The distance from the mounting piece center to the pipe center is 700mm.

20

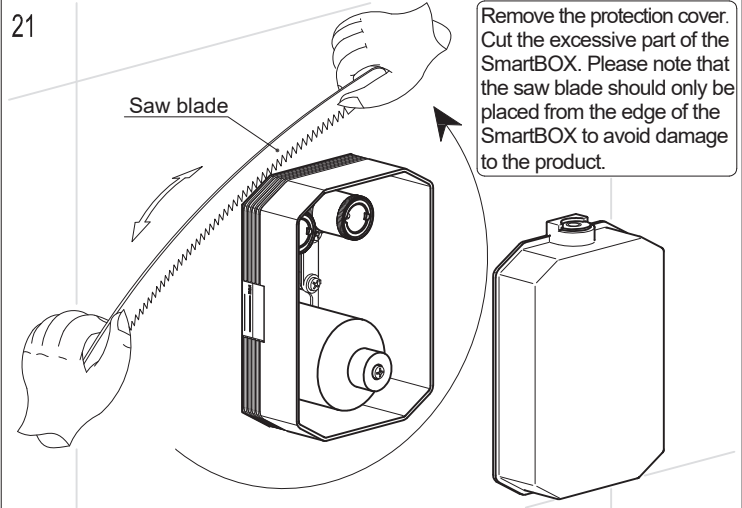
Connect handshower to shower holder with hose.

Handshower

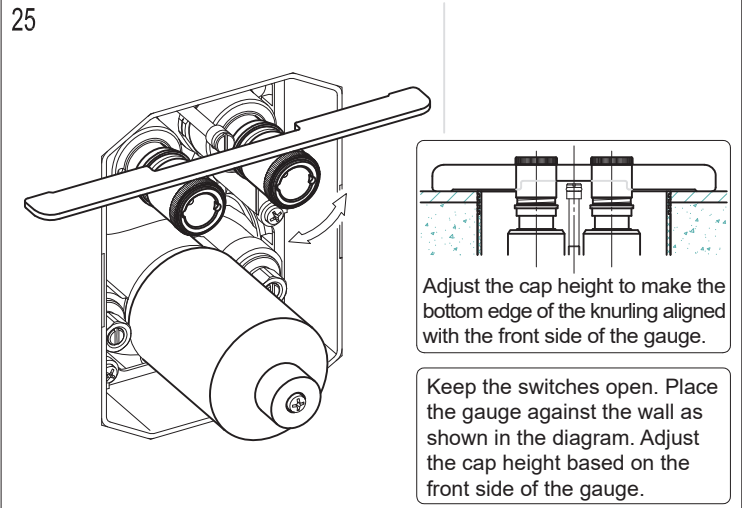
Hose

Hose

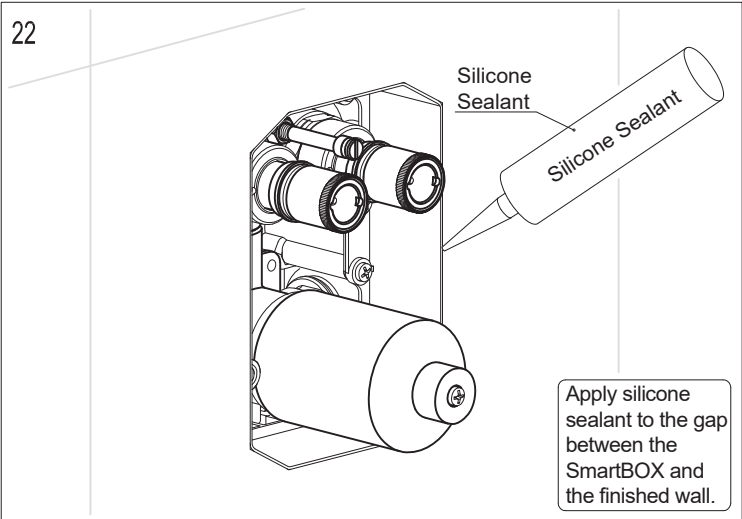
21



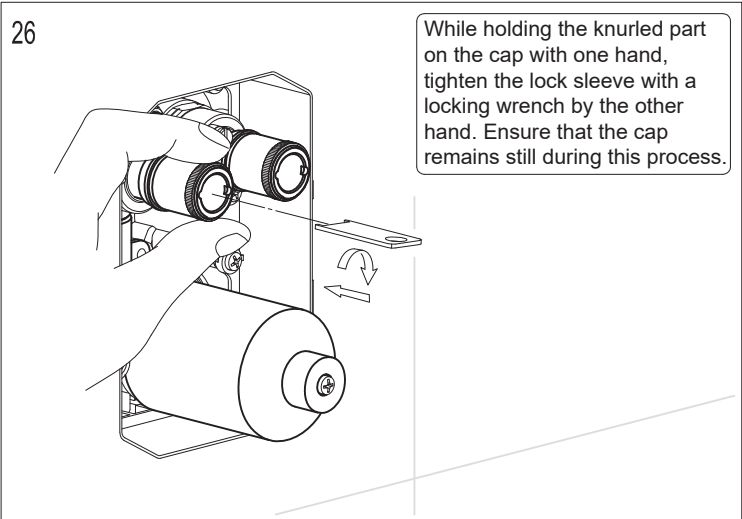
25



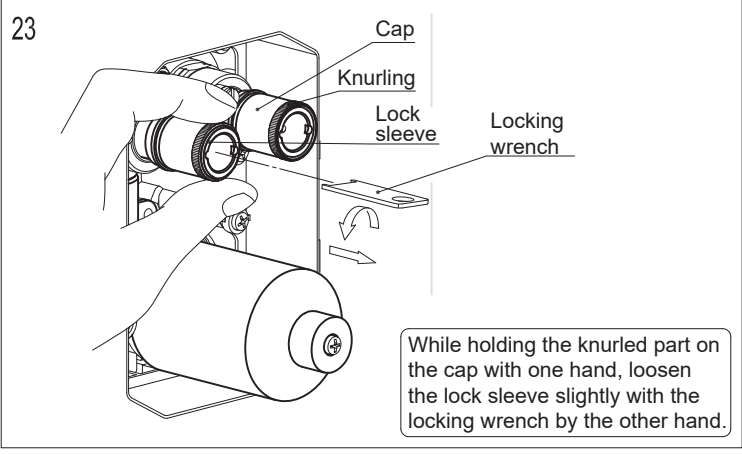
22



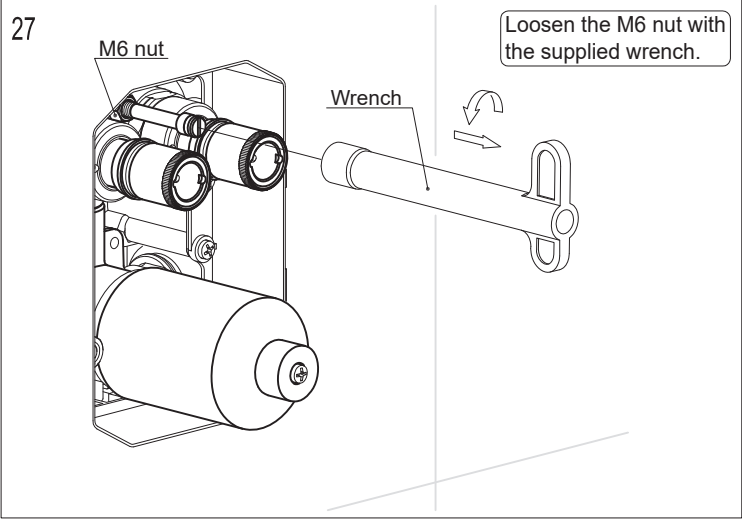
26



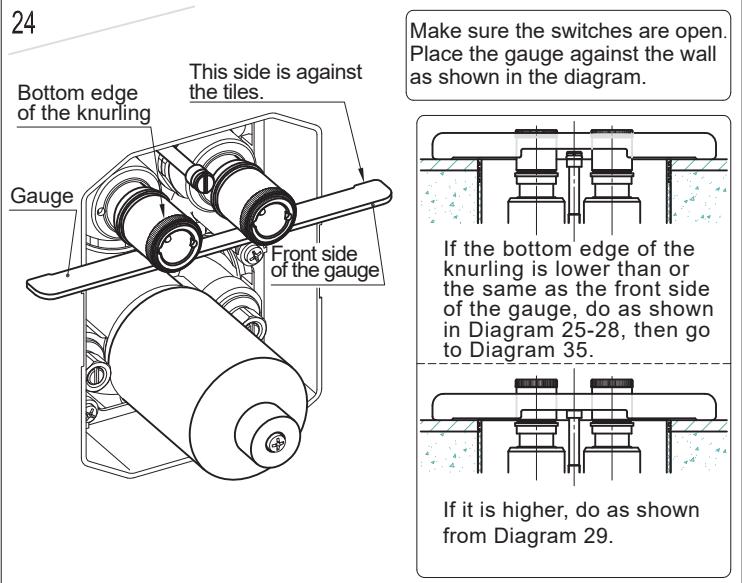
23



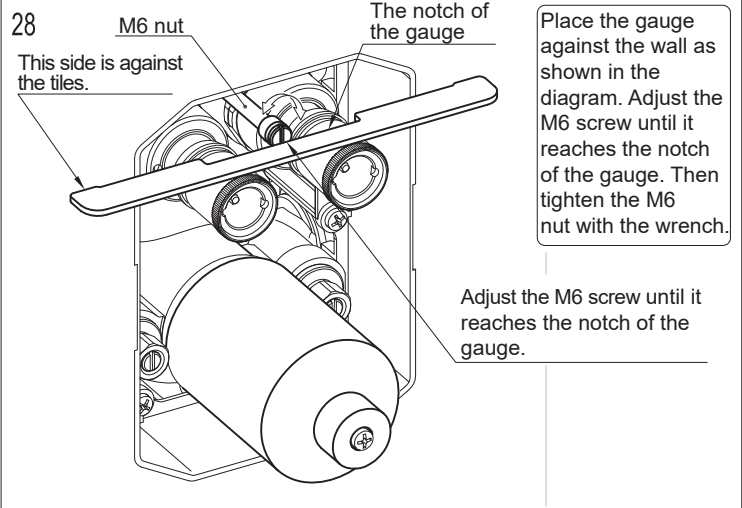
27



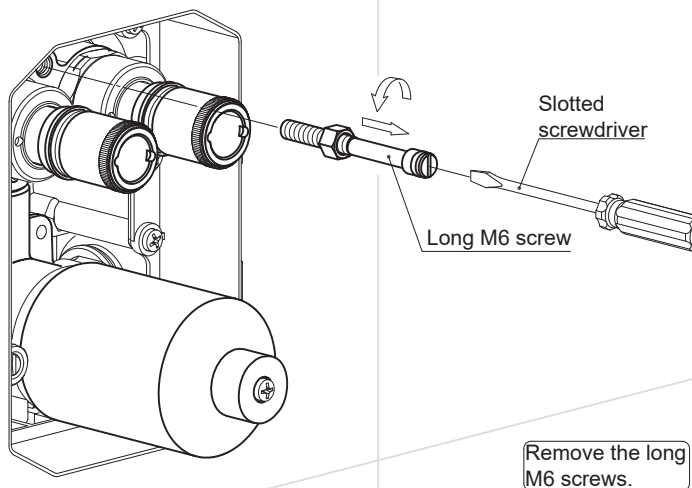
24



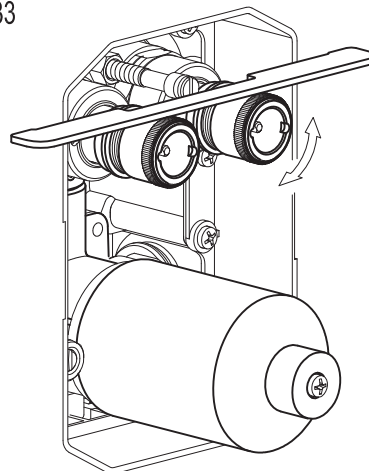
28



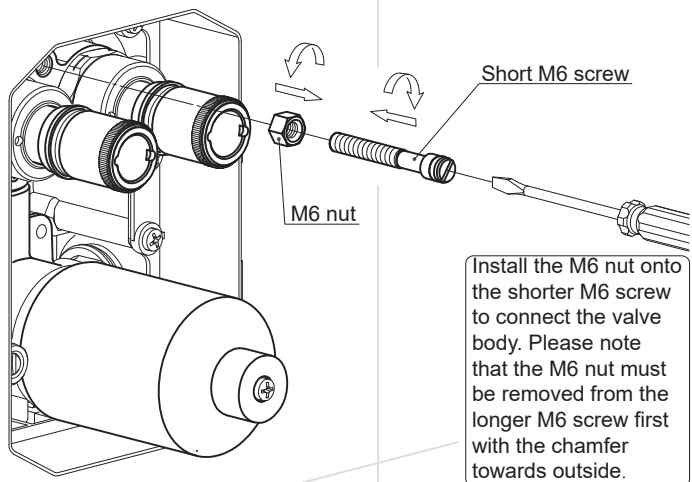
29



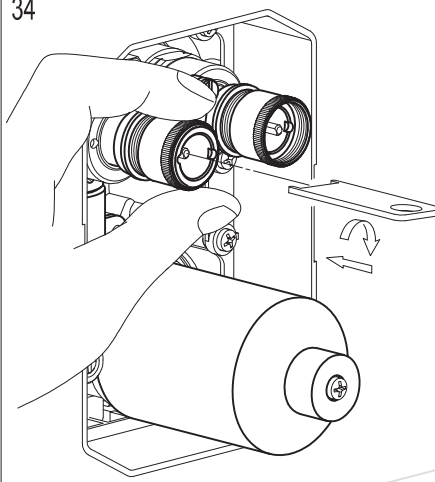
33



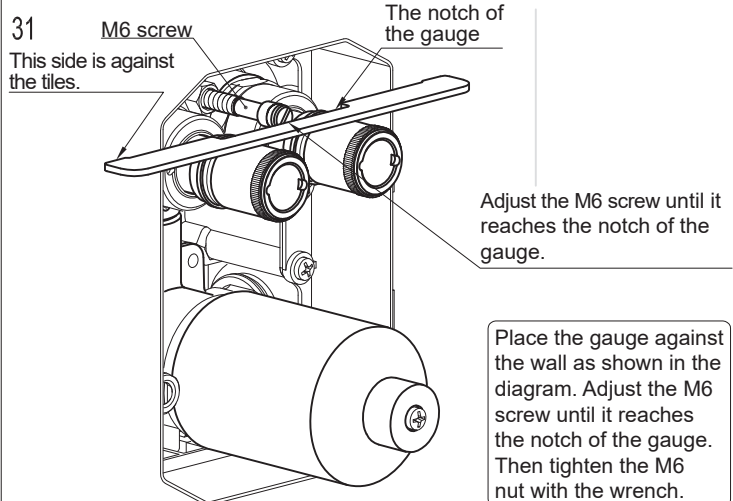
30



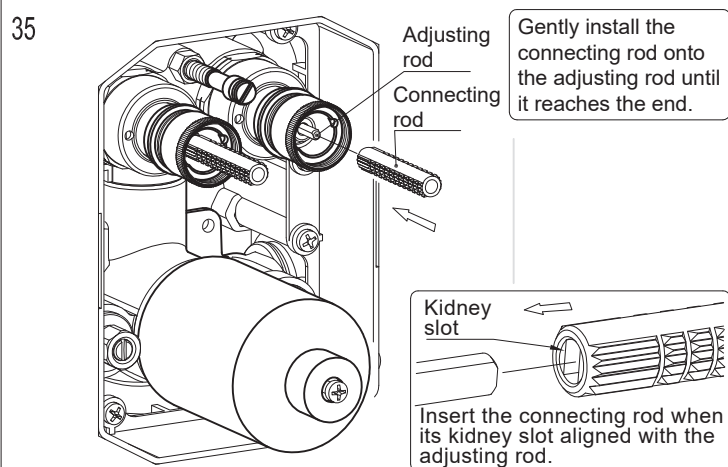
34



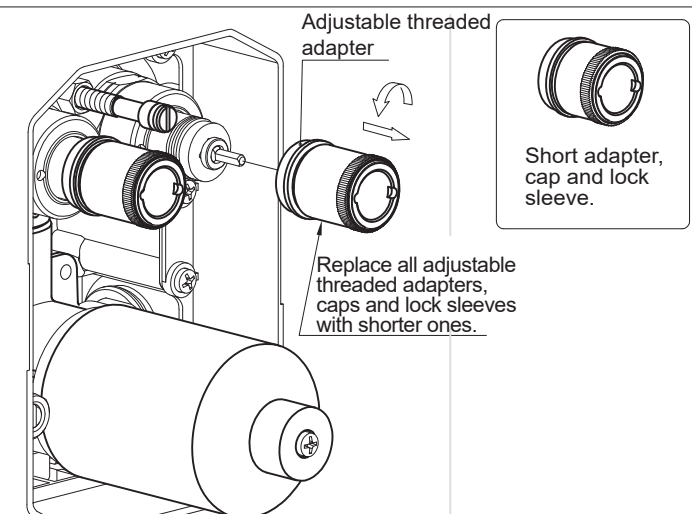
31



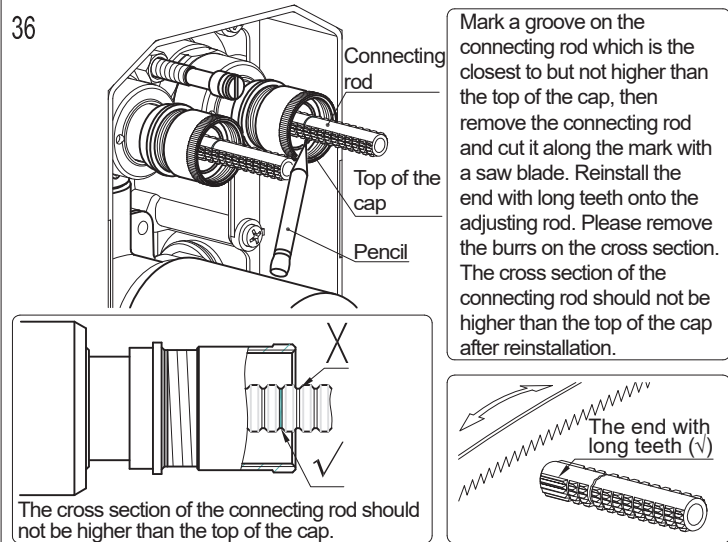
35



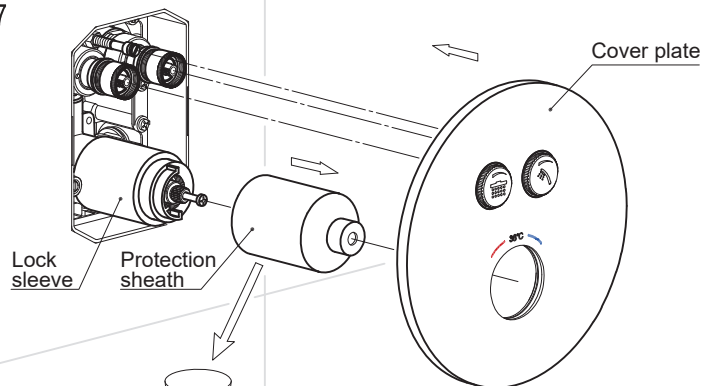
32



36

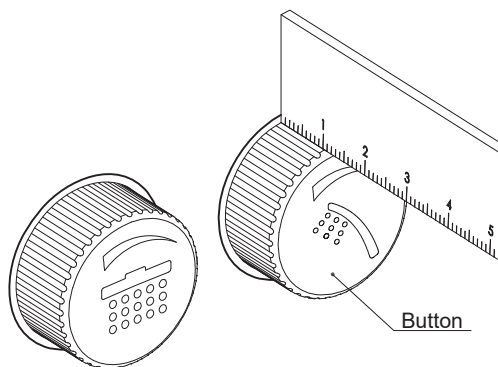


37



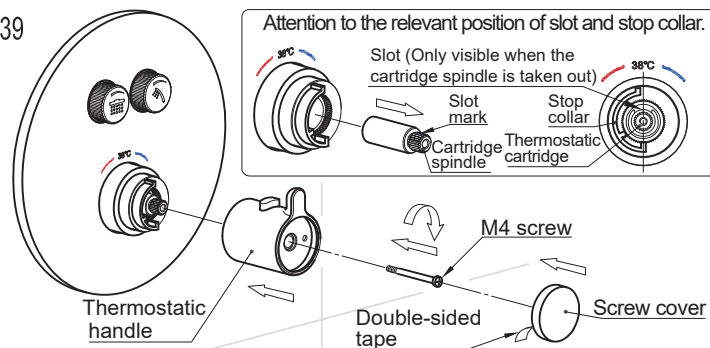
Take the protection sheath off the valve body. Place the cover plate onto the lock sleeve and M6 screws.

38



Check whether the cover plate is fixed. Press the button on the cover plate to see if the switch can work properly. Use a ruler to measure the button height. When it is turned on, the button should be 11-13mm high.

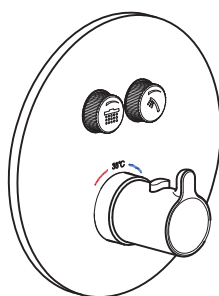
39



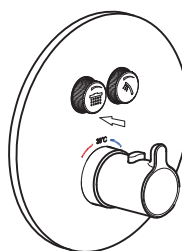
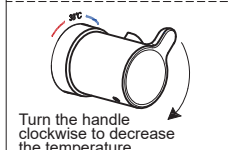
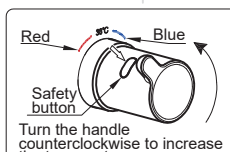
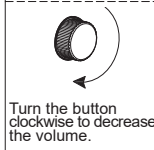
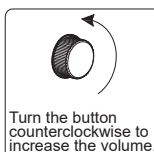
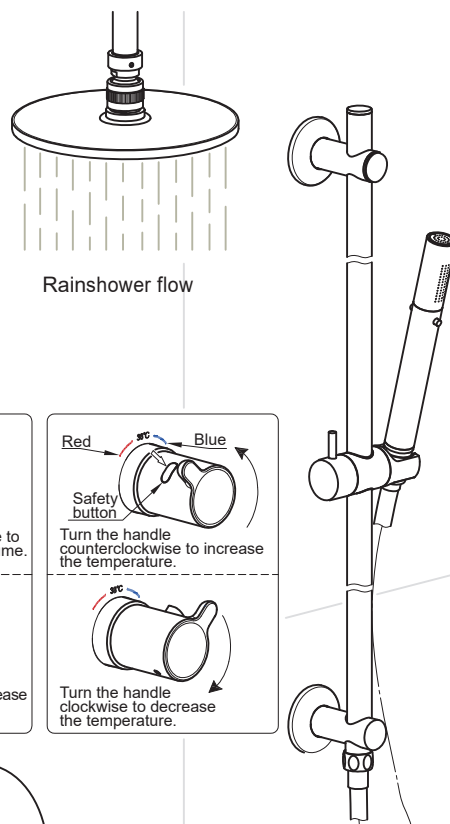
Remove the M4 screw and place the thermostatic handle onto the valve body. Attention to the relevant position of the slot on the thermostatic cartridge and the slot mark on the cartridge spindle. The slot, stop collar, safety button on the thermostatic handle and the 38°C mark on the cover plate should be aligned. Then tear off the double-sided tape at the bottom of the screw cover and tightly connect the screw cover to the handle.

40

Double check if the installation is proper upon completion.

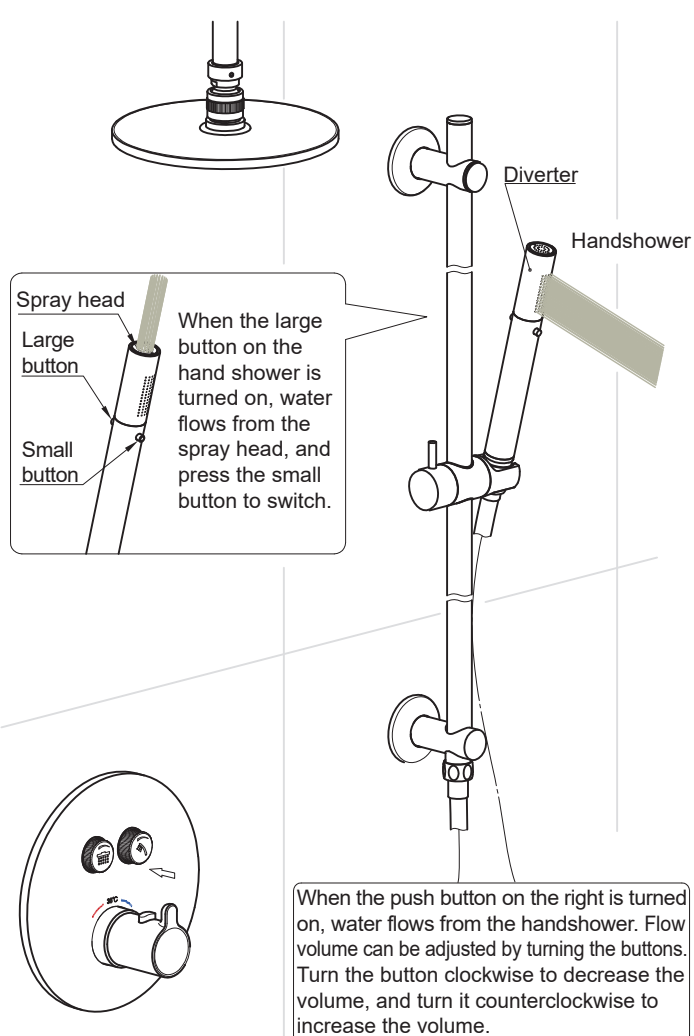


41



The diagram shows water flows from the rainshower when the push button on the leftmost is turned on. Turn the thermostatic handle counterclockwise to increase the temperature. If the water temperature needed is higher than 38°C, press the safety button first, then rotate. And turn the thermostatic handle clockwise to decrease the temperature. Flow volume can be adjusted by the buttons. Turn the button clockwise to decrease the volume, and turn it counterclockwise to increase the volume.

42



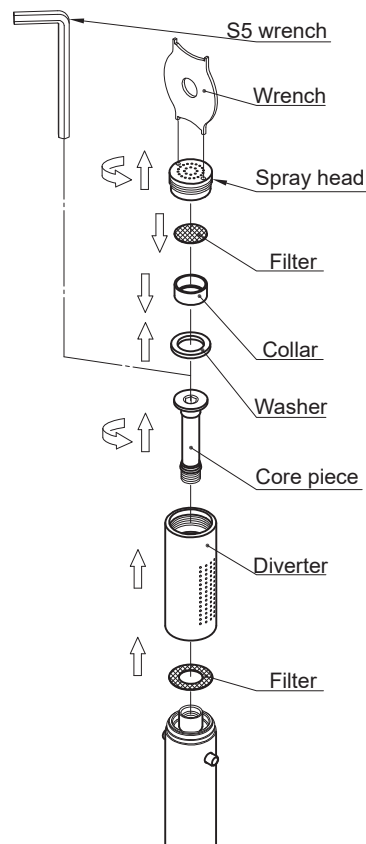
When the push button on the right is turned on, water flows from the handshower. Flow volume can be adjusted by turning the buttons. Turn the button clockwise to decrease the volume, and turn it counterclockwise to increase the volume.

V. Maintenance(Diagram43-46):

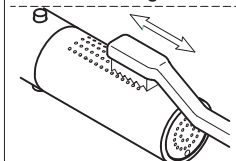
If the flow rate is lessened or temperature control is imprecise after a period of usage, it is possibly because water of poor quality blocks the filter of the thermostatic cartridge. Cleaning method should be taken as shown in Diagram 43: First, use suction cup to suck the screw cover. Remove the followings one by one: M4 screw, thermostatic handle and cover plate. Tighten the stop with a slotted screwdriver to turn off the water. Then remove the stop collar, lock sleeve, extended sleeve and cartridge spindle. Take out the thermostatic cartridge and clean the filter part with a brush and vinegar. Then assemble them back accordingly. After that, install the stop back to the initial position to turn on the water, and put back the cover plate and thermostatic handle in turn. Pay attention to keeping the four parts on one line: the slot on the thermostatic cartridge, stop collar, safety button on the thermostatic handle and the 38°C mark on the cover plate.

If water flow from the handshower is lessened or does not spray evenly after a period of usage, it is possibly because debris or limescale blocks the filter or nozzles. Please clean the filter and nozzles as shown in Diagram 44. If water flow from the rainshower does not spray evenly, or no water comes out of some nozzles, it is possibly because debris or limescale blocks nozzles. Please gently squeeze those rubber nozzles with fingers as shown in Diagram 45 and clean up the debris. If the volume from the handshower is normal, but the volume from the rainshower reduces, it is possibly because water of poor quality blocks the filter. Please take out the filter as shown in diagram 46 and assemble it back after cleaning with brush and vinegar.

44



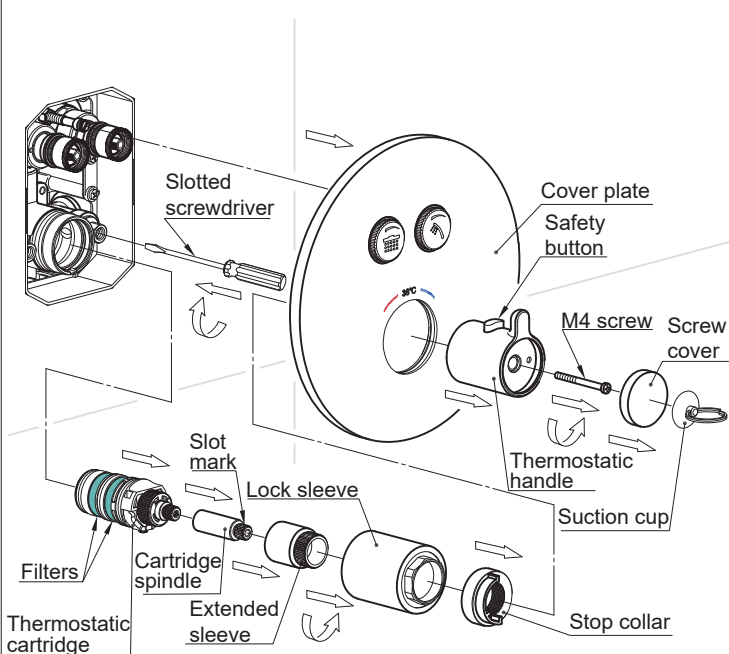
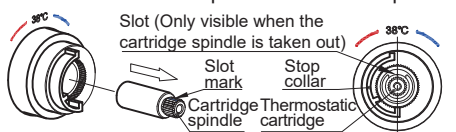
Nozzle cleaning method



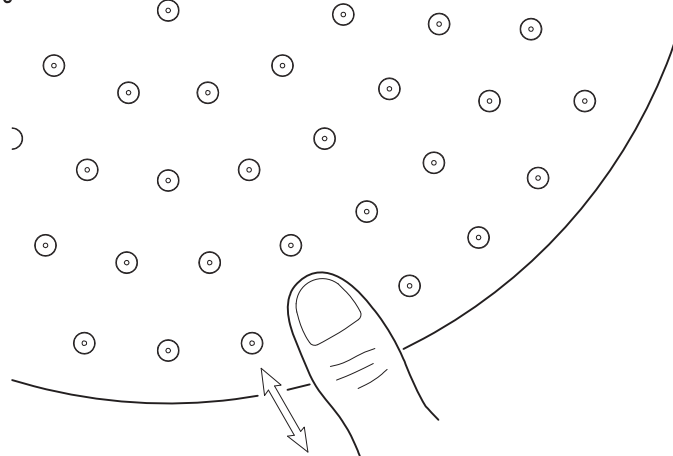
Take off the handshower and clean the nozzles with a brush and vinegar. Assemble it back after cleaning. Double check the flow volume. If the flow rate is too low, please remove the spray head and diverter, clean the filter, then install them back accordingly.

43

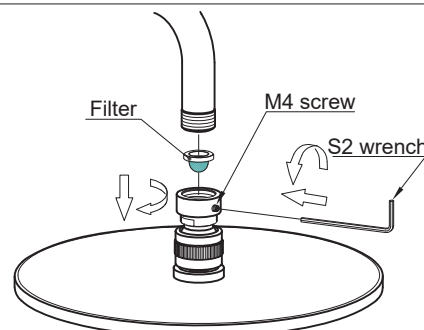
Attention to the relevant position of slot and stop collar.



45



46



Unscrew the M4 screw with S2 wrench and take off the shower head. Then pick out the filter from the shower head by a tool with tip such as a paper clip.